

Campionato Provinciale di Modena 2020

a cura di Lorenzo Rosa

30 gennaio 2020

Indice

Elenco dei giocatori	3
Introduzione	4
1° turno (13/12/2019 h. 20:15)	4
G. Franchini–D. Hodo, 1–0 (B40)	4
M.V. Galli–L. Tazzioli, 0–1 (B01)	5
W. Paoli–S. Marinelli, 1–0 (A07)	5
S. Barbari–G.M. Marinelli, 0–1 (B02)	6
S. Mammi–A. Bruni, 1–0 (A22)	7
J. Hodo–E. Giuntini, 0–1 (D25)	7
D. Brini–L. Vaccari, 1–0 (C87)	8
M. Vaccari–S. Garofalo, 0–1 (C41)	9
A. Castelli–A. Verrelli, 1–0 (C01)	9
2° turno (14/12/2019 h. 9:30)	10
E. Giuntini–G. Franchini, $\frac{1}{2}$ – $\frac{1}{2}$ (C11)	10
L. Tazzioli–S. Mammi, 1–0 (B12)	11
S. Garofalo–W. Paoli, 0–1 (D02)	11
G.M. Marinelli–D. Brini, 1–0 (B20)	12
L. Vaccari–M.V. Galli, 0–1 (A48)	12
S. Marinelli–J. Hodo, 1–0 (D11)	13
A. Verrelli–S. Barbari, 0–1 (C46)	14
A. Bruni–M. Vaccari, 1–0 (C55)	15
3° turno (14/12/2019 h. 15:00)	16
W. Paoli–L. Tazzioli, $\frac{1}{2}$ – $\frac{1}{2}$ (D03)	16
G. Franchini–G.M. Marinelli, 1–0 (B06)	16
S. Mammi–E. Giuntini, 0–1 (E94)	17
D. Brini–S. Marinelli, 0–1 (B13)	17
M.V. Galli–S. Garofalo, $\frac{1}{2}$ – $\frac{1}{2}$ (C35)	18
S. Barbari–A. Castelli, 1–0 (C42)	18
D. Hodo–A. Bruni, $\frac{1}{2}$ – $\frac{1}{2}$ (C84)	19
J. Hodo–A. Verrelli, 1–0 (D20)	20
M. Vaccari–L. Vaccari, 0–1 (C50)	21
4° turno (15/12/2019 h. 9:00)	22
L. Tazzioli–G. Franchini, $\frac{1}{2}$ – $\frac{1}{2}$ (B40)	22
E. Giuntini–W. Paoli, 0–1 (B01)	22
S. Marinelli–S. Barbari, 0–1 (D00)	23
G.M. Marinelli–S. Garofalo, 1–0 (A04)	24

A. Bruni–M.V. Galli, 0–1 (C53)	24
L. Vaccari–S. Mammi, 0–1 (D05)	25
A. Castelli–D. Brini, 1–0 (B20)	26
D. Hodo–J. Hodo, 1–0 (B24)	26
5° turno (15/12/2019 h. 14:30)	27
W. Paoli–G.M. Marinelli, 1–0 (E67)	27
S. Barbari–L. Tazzioli, 0–1 (B01)	27
G. Franchini–M.V. Galli, 1–0 (C45)	28
E. Giuntini–A. Castelli, 1–0 (C42)	29
S. Mammi–S. Marinelli, 1–0 (A16)	29
S. Garofalo–A. Bruni, 1–0 (D02)	30
L. Vaccari–D. Hodo, 0–1 (E67)	30
J. Hodo–M. Vaccari, 0–1 (A45)	31
Classifica finale	33
Tabellone	34

Elenco dei giocatori

Campionato Provinciale di Modena 2020					
Registered Players					
N	Nome	Titolo	Fed	ID FIDE	FRtg
1	FRANCHINI Gabriele	FM	MO	806790	2230
2	TAZZIOLI Luca	CM	MO	863491	2082
3	PAOLI Walter	CM	MO	808237	1936
4	MARINELLI Gian Marco	CM	MO	812277	1865
5	MAMMI SAMUELE	1N	MO	2850538	1814
6	GIUNTINI ENRICO	1N	MO	2827714	1812
7	BRINI DARIO	1N	BO	2849599	1807
8	GAROFALO Sergio	CM	MO	812056	1700
9	CASTELLI Antonio	2N	MO	853941	1613
10	HODO DIONIS	2N	MO	2830030	1606
11	GALLI MARIA VITTORIA	3N	MO	2853219	1486
12	MARINELLI Sofia	3N	MO	899836	1418
13	BARBARI SAMUEL	NC	MO	2852778	1406
14	BRUNI ALESSANDRO	NC	MO	2860657	1379
15	HODO JONIAN	NC	MO	2842896	1347
16	VACCARI LUIGI	3N	MO	2836667	1331
17	VACCARI MARCO	NC	MO	2836675	1330
18	VERRELLI ANTONIO	NC	MO	2870903	1296

Introduzione

Il Campionato Provinciale di Modena 2020, dedicato alla memoria di Mario Viola e valevole per gli Ottavi di Finale del 80° Campionato Italiano Assoluto, si è svolto dal 13 al 15 dicembre 2019 presso i locali della Polisportiva San Faustino in via Wiligelmo 72 a Modena.

Il torneo è stato organizzato dal circolo Club 64 Modena A.S.D., sotto il direttivo formato da Adriano Verrelli (presidente), Riccardo Dionigi (vicepresidente), Mattia Sfera (segretario), Francesco Ferraguti e Cosimo Damiano Ballestri. Il torneo è stato arbitrato da ACN Luciano Panini e AR Lorenzo Rosa.

Al torneo hanno preso parte 18 giocatori (1 FM, 4 CM, 3 1N, 2 2N, 2 3N), con media Elo complessiva di 1637, di cui 17 tesserati per circoli della provincia di Modena. Di questi, 12 avevano categoria non superiore a Prima Nazionale e i primi 4 di essi (pari al 30% arrotondato per eccesso) si sono qualificati al Campionato Regionale Emilia-Romagna 2020, valevole per i Quarti di Finale del 80° Campionato Italiano Assoluto, essendo i giocatori con titoli di Candidato Maestro e superiori qualificati di diritto.

Il controllo di tempo è stato di 90 minuti più 30 secondi a mossa e il torneo si è svolto su cinque turni con sistema di abbinamento Svizzero Olandese.

Per la gestione del torneo è stato utilizzato il software Vega versione 8.2.0 e per l'abbinamento del primo turno sono state utilizzate le liste Elo FIDE aggiornate al 1 dicembre 2019.

Come da bando, i sistemi di spareggio tecnico utilizzati sono stati, nell'ordine, Buchholz Cut 1, Buchholz Integrale e ARO.

Il vincitore del torneo e Campione Provinciale 2020 è stato CM Walter Paoli con punti 4.5/5, seguito da CM Luca Tazzioli (4/5) e FM Gabriele Franchini (4/5).

Si sono qualificati per il Campionato Regionale Emilia-Romagna 2020 i giocatori 1N Enrico Giuntini (3.5/5), Samuel Barbari (3/5), 1N Samuele Mammi (3/5) e 3N Maria Vittoria Galli (2.5/5).

Di particolare rilievo sono state le prestazioni di Walter Paoli e Samuel Barbari, che hanno registrato coefficienti Elo di 1.48 e 1.21, rispettivamente.

Le partite di seguito riportate per ogni turno sono in ordine dalla prima scacchiera all'ultima.

1° turno (13/12/2019 h. 20:15)

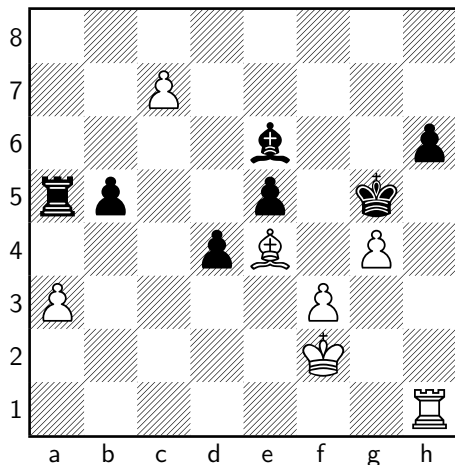
G. Franchini (2230) – D. Hodo (1606)

DIFESA SICILIANA (B40)

1	e4	c5
2	♞f3	e6
3	c4	♞c6
4	♞c3	♞d4
5	d3	d6
6	♟e3	e5
7	♞d5	♟e7
8	♟e2	f5
9	♟xd4	cxd4
10	♞d2	♞f6
11	O-O	O-O
12	exf5	♟xf5
13	♞xf6+	♟xf6
14	♞b3	♟h8
15	♟f3	♞b8
16	♟e4	♟e6
17	♞d1	♟g5
18	♞h5	♟h6
19	b4	♞g5
20	♞xg5	♟xg5
21	♞b3	b5
22	c5	d5
23	♟f3	♟f5
24	♞fe1	♞fe8
25	♟xd5	♟xd3
26	♟c6	♞e7
27	♟e4	♟c4
28	♞a5	♟d2
29	♞c6	♟xe1
30	♞xe1	♞be8
31	♞xe7	♞xe7
32	♟b1	g5
33	f3	♟g7
34	♟f2	♟f6
35	a3	h6
36	h4	♟d5
37	hxg5+	♟xg5
38	g3	♞e6
39	♟h7	♟c4
40	♟e4	♞e7
41	♞h1	a5
42	bxa5	♞a7
43	c6	♞xa5

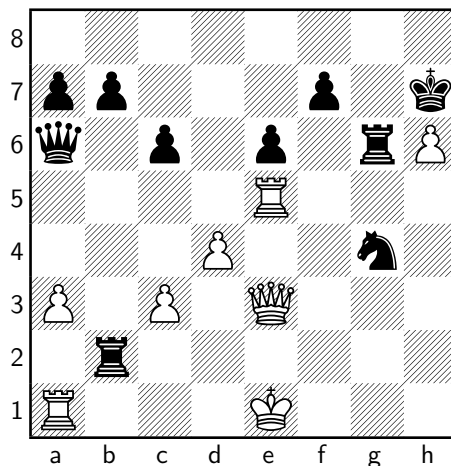
44 c7 ♘e6
45 g4

1 - 0



25 ♘d3 ♖f4
26 ♗h3 ♖d5
27 ♘xg6 ♖g5+
28 ♖f1 ♖xg6
29 ♖e3 ♖h7
30 ♖e2 ♗a5
31 ♖e5 ♗a6+
32 ♖d2 ♖xf2+
33 ♖e1 ♖xb2
34 ♗e3 ♘g4

0 - 1



M.V. Galli (1486) – L. Tazzioli (2082)

DIFESA SCANDINAVA (B01)

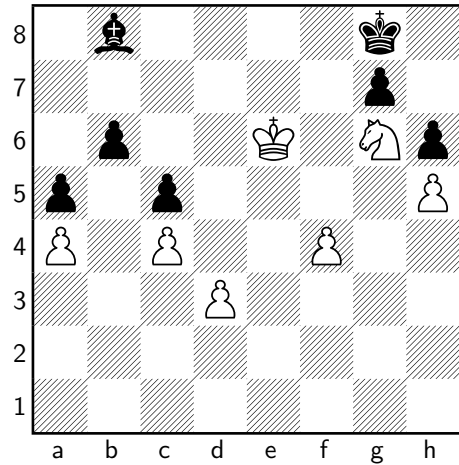
1 e4 d5
2 exd5 ♗xd5
3 ♘c3 ♗a5
4 d4 ♘f6
5 ♘d2 c6
6 ♘c4 ♘f5
7 ♘f3 e6
8 O-O ♘b4
9 a3 ♘xc3
10 ♘xc3 ♗c7
11 ♖e1 ♘e4
12 ♘d2 ♘xd2
13 ♗xd2 O-O
14 ♘h4 ♘g6
15 ♘xg6 hxg6
16 ♗g5 ♘d7
17 h4 ♘f6
18 ♘e2 ♖ad8
19 c3 ♖d6
20 g4 ♖fd8
21 h5 gxh5
22 gxh5 ♖d5
23 ♗h4 ♖f5
24 h6 g6

W. Paoli (1936) – S. Marinelli (1418)

ATTACCO EST INDIANO (A07)

1 ♘f3 d5
2 g3 ♘f6
3 ♘g2 ♘f5
4 O-O e6
5 c4 ♘e7
6 d3 O-O
7 cxd5 exd5
8 ♗b3 b6
9 ♘e5 c5
10 a4 ♘e6
11 ♘a3 ♘d6
12 ♘f3 ♘c6
13 ♘d2 ♖e8
14 ♘b5 d4
15 ♗c2 ♘d5
16 ♘g5 ♘e7

17	♗xe6	fxe6
18	♖b3	♖d7
19	♘a3	♜ad8
20	♘c4	♘c7
21	♙f4	♙f6
22	♙xc7	♖xc7
23	♙xc6	♖xc6
24	♘d2	♖d5
25	♖d1	e5
26	b3	♜d7
27	♘e4	♜f8
28	♖c2	h6
29	♖c4	♖xc4
30	bxc4	♙d8
31	♜fb1	a5
32	h4	♜f5
33	♞g2	♞f8
34	♜f1	♞e7
35	f4	exf4
36	♜xf4	♜xf4
37	gxf4	♞e6
38	♜b1	♞f5
39	♞f3	♞c7
40	h5	♞e6
41	♞g4	♜f7
42	♜f1	♜f5
43	♘g3	♜f7
44	♜f3	♙b8
45	e3	dxe3
46	♜xe3+	♞d7
47	♘e2	♜e7
48	♜xe7+	♞xe7
49	♞f5	♞f7
50	♘c3	♙c7
51	♘d5	♙d8
52	♘c3	♙c7
53	♘e4	♙b8
54	♘d2	♙c7
55	♘f3	♙d6
56	♘e5+	♞g8
57	♞e6	♙b8
58	♘g6	



S. Barbari (1406) – G.M. Marinelli (1865)

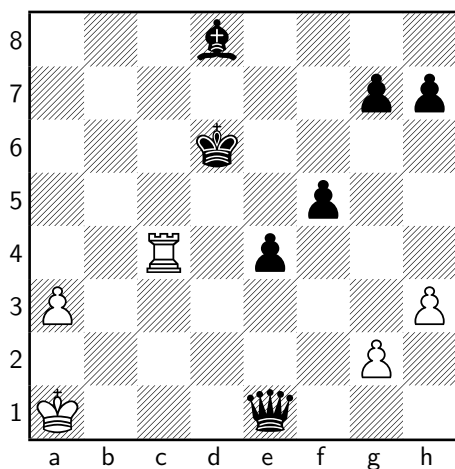
DIFESA ALECHIN (B02)

1	e4	♘f6
2	♘c3	d5
3	exd5	♘xd5
4	♘xd5	♖xd5
5	♖f3	♙e6
6	b3	♖e5+
7	♞d1	♘c6
8	♜b1	O-O-O
9	♖e3	♖xe3
10	fxe3	♙f5
11	a3	e5
12	♙c4	♙c5
13	d3	e4
14	d4	♘e5
15	♞e1	♘xc4
16	bxc4	♙e7
17	h3	♙h4+
18	♞d2	♙e6
19	♞c3	♙e1+
20	♞b3	b5
21	♘e2	♙xc4+
22	♞b2	♙h4
23	♘c3	f5
24	♙d2	c5
25	♞a1	cxd4
26	♘xb5	dxe3
27	♘xa7+	♞c7
28	♙a5+	♞d7

1 – 0

29	♙xd8	♖xd8
30	♖bd1+	♘c7
31	♖xd8	♙xd8
32	♖e1	e2
33	♘b5+	♙xb5
34	c4	♙xc4
35	♖c1	♘d6
36	♖xc4	e1♙+

0 - 1



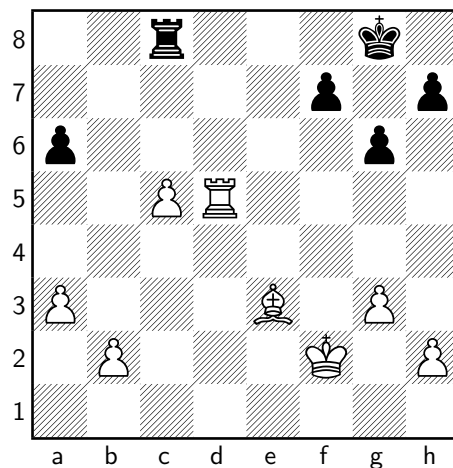
S. Mammi (1814) – A. Bruni (1379)

APERTURA INGLESE (A22)

1	c4	e5
2	♘c3	♘f6
3	g3	♙c5
4	e3	O-O
5	♙g2	c6
6	♘ge2	d6
7	O-O	♙e6
8	d4	exd4
9	exd4	♙b6
10	d5	cxd5
11	♘xd5	♘xd5
12	♙xd5	♙xd5
13	♙xd5	♘c6
14	♙f4	♙c7
15	♖fd1	♙f6
16	♘d4	♘xd4
17	♖xd4	♙b6
18	♖d2	♖fe8

19	♙xd6	♖e6
20	♙b4	♙f5
21	♖ad1	♙a5
22	♙xb7	♖ae8
23	♙d5	♙xd5
24	♖xd5	♖e1+
25	♖xe1	♙xe1
26	♙e3	a6
27	a3	♖c8
28	♘f1	♙xf2
29	♘f2	g6
30	c5	

1 - 0



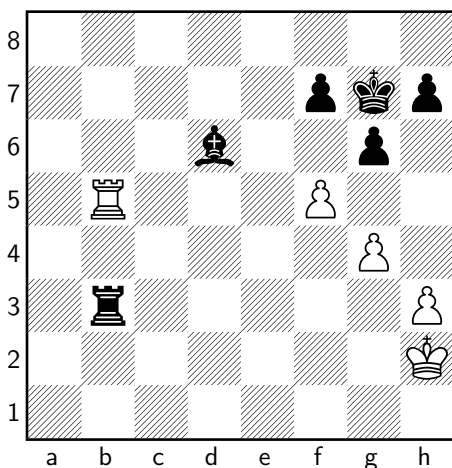
J. Hodo (1347) – E. Giuntini (1812)

GAMBETTO DI DONNA ACCETTATO (D25)

1	d4	d5
2	c4	dxc4
3	e3	♘f6
4	♙xc4	g6
5	♘c3	♙g7
6	♘f3	O-O
7	h3	a6
8	O-O	♘c6
9	a3	b5
10	♙a2	♙b7
11	♙c2	♘e8
12	♘e4	♖a7
13	♘c5	♙a8
14	♙d2	e5

15 dxe5 ♘xe5
 16 ♘xe5 ♙xe5
 17 ♘b3 ♖e7
 18 ♙b4 ♘d6
 19 ♙c5 ♗b7
 20 f4 ♙g7
 21 e4 ♖xe4
 22 ♖xe4 ♘xe4
 23 ♙xf8 ♗xf8
 24 ♗ab1 c5
 25 ♗fe1 ♗c7
 26 ♗e2 ♗d7
 27 ♗c1 c4
 28 ♗cc2 cxb3
 29 ♗c8+ ♗e7
 30 ♗xa8 ♙d4+
 31 ♗h2 bxa2
 32 ♗xe4+ ♗f6
 33 ♗xa6+ ♗g7
 34 ♗e1 ♙xb2
 35 ♗b6 a1♖
 36 ♗xa1 ♙xa1
 37 ♗xb5 ♗a7
 38 ♗b3 ♙f6
 39 g4 ♙e7
 40 ♗b5 ♗xa3
 41 ♗g2 ♙d6
 42 f5 ♗g3+
 43 ♗h2 ♗b3+

0 - 1

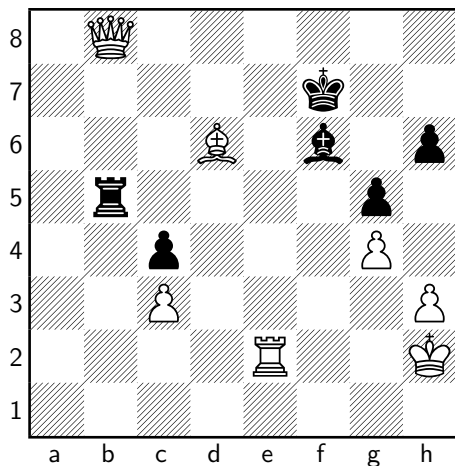


D. Brini (1807) – L. Vaccari (1331)

PARTITA SPAGNOLA (C87)

1 e4 e5
 2 ♘f3 ♘c6
 3 ♙b5 ♘f6
 4 O-O d6
 5 ♗e1 ♙e7
 6 c3 a6
 7 ♙a4 O-O
 8 d4 ♙d7
 9 ♘bd2 h6
 10 ♘f1 b5
 11 ♙c2 ♙g4
 12 d5 ♘a7
 13 ♘e3 ♖d7
 14 h3 ♙h5
 15 a4 c6
 16 dxc6 ♘xc6
 17 g4 ♙g6
 18 ♘d5 ♘xd5
 19 ♖xd5 ♗ab8
 20 ♙d3 ♘d8
 21 ♘xe5 ♖e6
 22 ♖xe6 ♘xe6
 23 ♘d7 ♗fd8
 24 ♘xb8 ♗xb8
 25 axb5 axb5
 26 f4 ♘c5
 27 ♙c2 f6
 28 b4 ♘d7
 29 ♗a7 ♙e8
 30 ♙b3+ ♗f8
 31 ♗e2 ♗c8
 32 ♙b2 ♗b8
 33 ♗e1 ♘b6
 34 e5 dxe5
 35 fxe5 ♗d8
 36 exf6 ♙xf6
 37 ♗b7 ♘c4
 38 ♙xc4 bxc4
 39 ♗c7 ♙f7
 40 ♗e2 ♗d1+
 41 ♗h2 g6
 42 b5 ♗d5
 43 b6 ♗b5
 44 b7 ♗g7
 45 ♙a3 g5
 46 ♙d6 ♗g6
 47 ♗xf7 ♗xf7
 48 b8♖

1 - 0



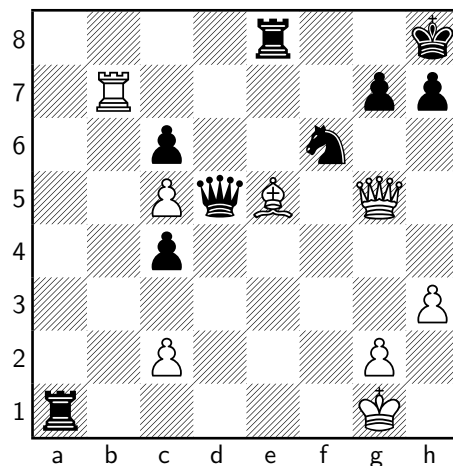
M. Vaccari (1330) – S. Garofalo (1700)

DIFESA PHILIDOR (C41)

1	e4	e5
2	♘f3	d6
3	d4	♘d7
4	dxe5	dxe5
5	♙c4	c6
6	♙g5	♙e7
7	♖d2	♘gf6
8	♘c3	O-O
9	a3	♖c7
10	b4	b5
11	♙a2	a5
12	O-O	axb4
13	axb4	♙h8
14	♙ab1	♘b6
15	♖e2	♙g4
16	h3	♙e6
17	♙xe6	fxe6
18	♘d2	♙a3
19	♖e3	♙fa8
20	f4	exf4
21	♙xf4	e5
22	♙g3	♘c4
23	♘xc4	bxc4
24	♖g5	♘xe4
25	♖g4	♙xc3
26	♙f7	♙c5+
27	bxc5	♖xf7

28	♙xe5	♘f6
29	♖f5	♙ca3
30	♙b6	♖d5
31	♙b7	♙e8
32	♖g5	♙a1+

0 - 1



A. Castelli (1613) – A. Verrelli (1296)

DIFESA FRANCESE (C01)

1	e4	e6
2	♘c3	d5
3	exd5	exd5
4	d4	♘f6
5	♙g5	♙e7
6	♘f3	♙g4
7	h3	♙h5
8	♙e2	♙xf3
9	♙xf3	♘e4
10	♙xe7	♖xe7
11	♘xd5	♘xf2+
12	♙xf2	♖d6
13	♙e1+	♙f8
14	♖e2	♘c6
15	c3	♖d7
16	b4	♙e8
17	♖xe8+	♖xe8
18	♙xe8+	♙xe8
19	♘xc7+	♙d7
20	♘b5	a6
21	♘a3	♙e8

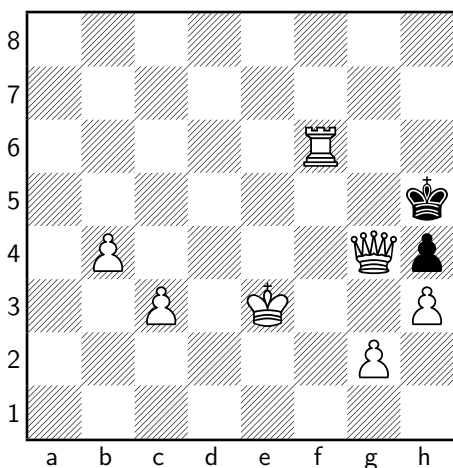
2° turno (14/12/2019 h. 9:30)

E. Giuntini (1.0) – G. Franchini (1.0)

DIFESA FRANCESE (C11)

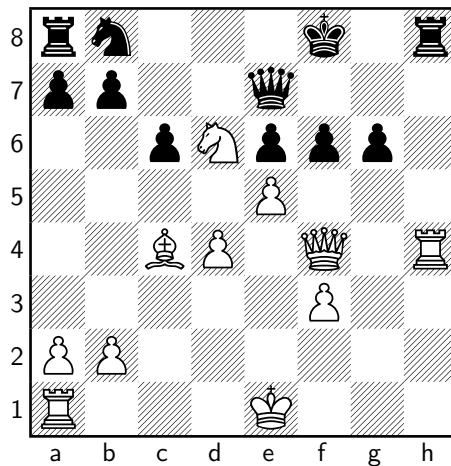
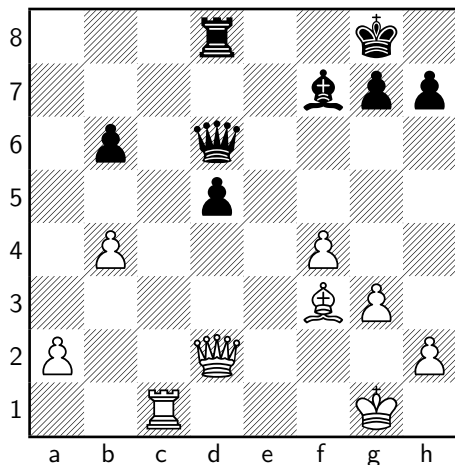
22 ♖e1 ♜c8
 23 ♘g4+ ♝c7
 24 ♘xc8 ♝xc8
 25 d5 ♞d8
 26 ♞c4 b5
 27 ♞e5 ♝c7
 28 d6+ ♝xd6
 29 ♞d1+ ♝xe5
 30 ♞xd8 ♝e6
 31 ♝e3 ♝e7
 32 ♞a8 ♝f6
 33 ♞xa6+ ♝g5
 34 ♞b6 ♝h4
 35 ♞xb5 g5
 36 a4 ♝g3
 37 ♞xg5+ ♝h4
 38 ♞g7 ♝h5
 39 ♞xf7 ♝g6
 40 ♞f4 ♝g5
 41 a5 h5
 42 a6 h4
 43 a7 ♝g6
 44 a8♚ ♝g5
 45 ♚g8+ ♝h5
 46 ♞f5+ ♝h6
 47 ♞f6+ ♝h5
 48 ♚g4#

1 – 0



1 e4 e6
 2 d4 d5
 3 ♞c3 ♞f6
 4 e5 ♞fd7
 5 f4 c5
 6 ♞f3 ♞c6
 7 ♘e3 a6
 8 ♘e2 ♚b6
 9 ♞a4 ♚a5+
 10 c3 cxd4
 11 b4 ♚c7
 12 ♞xd4 ♞xd4
 13 ♚xd4 ♘e7
 14 ♞c1 f6
 15 exf6 ♘xf6
 16 ♚d2 ♚c6
 17 ♞c5 ♞b6
 18 ♘d4 O-O
 19 O-O ♞c4
 20 ♚d3 ♞d6
 21 ♘f3 b6
 22 ♞b3 a5
 23 ♞fd1 ♞c4
 24 ♚e2 ♘xd4+
 25 ♞xd4 ♚d6
 26 g3 ♘d7
 27 ♞xe6 ♘xe6
 28 ♚xc4 ♞fc8
 29 ♚e2 ♘f7
 30 ♚d2 axb4
 31 cxb4 ♞xc1
 32 ♞xc1 ♞d8

1/2 – 1/2



S. Garofalo (1.0) – W. Paoli (1.0)

PARTITA DI DONNA (D02)

L. Tazzioli (1.0) – S. Mammi (1.0)

DIFESA CARO-KANN (B12)

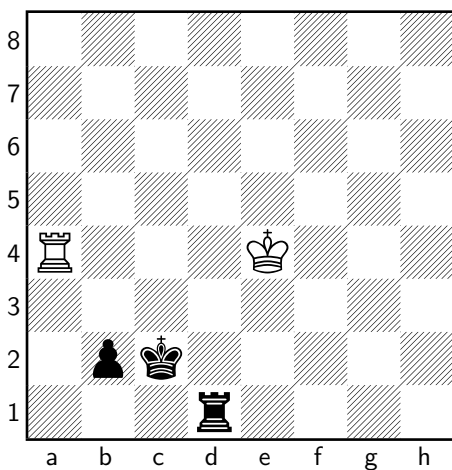
1	e4	c6
2	d4	d5
3	e5	♟f5
4	h4	h5
5	c4	dxc4
6	♞xc4	e6
7	♞c3	♟e7
8	♞ge2	♟g4
9	♟g5	♟xg5
10	hxg5	♞xg5
11	♞e4	♞e7
12	♞d6+	♟f8
13	f3	♟f5
14	g4	♟g6
15	♞f4	♞h6
16	♞d2	h4
17	g5	♞h8
18	♞xg6+	f×g6
19	♞f4+	♞f6
20	g×f6	g×f6
21	♞xh4	

1 – 0

1	d4	♞f6
2	♞f3	d5
3	♞bd2	♟f5
4	♞h4	♟g6
5	g3	e6
6	♟g2	c6
7	O-O	♟e7
8	♞xg6	hxg6
9	c4	♞bd7
10	e4	dxe4
11	♞xe4	♞xe4
12	♟xe4	♞f6
13	♟g2	♞a5
14	♟d2	♟b4
15	♟xb4	♞xb4
16	♞b3	♞xb3
17	axb3	a6
18	♞fe1	O-O-O
19	♞ad1	♞d7
20	b4	♞hd8
21	b5	axb5
22	cxb5	cxb5
23	♞c1+	♟b8
24	♞c5	♞xd4
25	♞xb5	♞d5
26	♟f3	♞b4
27	♞xb4	♞xb4
28	♟g2	♞d2

29	♖e2	♗d6
30	♗e3	♘d3
31	♙e4	♘c5
32	b4	♘xe4
33	♗xe4	♙c7
34	♙f3	♗d3+
35	♙e2	♗d7
36	f4	♙c6
37	g4	♙b5
38	h4	b6
39	♙e3	♗d1
40	♙e2	♗b1
41	f5	gxf5
42	gxf5	exf5
43	♗e7	♗xb4
44	♗xf7	♗xh4
45	♗xf5+	♙b4
46	♗g5	♗d4
47	♗xg7	b5
48	♗g1	♙c3
49	♙e3	♗d8
50	♗c1+	♙b2
51	♗c5	b4
52	♗h5	b3
53	♗h7	♙b1
54	♗g7	b2
55	♗a7	♗d5
56	♗a4	♙c2
57	♙e4	♗d1

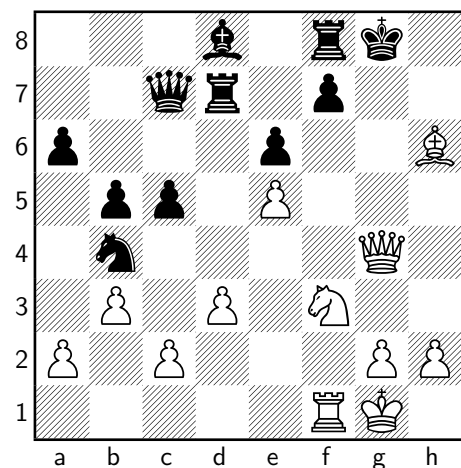
0 - 1



DIFESA SICILIANA (B20)

1	e4	c5
2	b3	d6
3	♙b2	♘f6
4	♙b5+	♘bd7
5	♗e2	a6
6	♙xd7+	♙xd7
7	f4	e6
8	♘f3	♙e7
9	O-O	O-O
10	♘c3	♙c6
11	♗ad1	♗c7
12	d3	b5
13	e5	dxe5
14	fxe5	♘d5
15	♘e4	♗ad8
16	♘fg5	h6
17	♘f3	♘b6
18	♗e3	♙xe4
19	♗xe4	♘d7
20	♗de1	♘b8
21	♙c1	♘c6
22	♗g4	♙h7
23	♗e4	♘b4
24	♗h5	♗d7
25	♗g4	♙d8
26	♗xg7+	♙xg7
27	♙xh6+	♙g8
28	♗g4+	

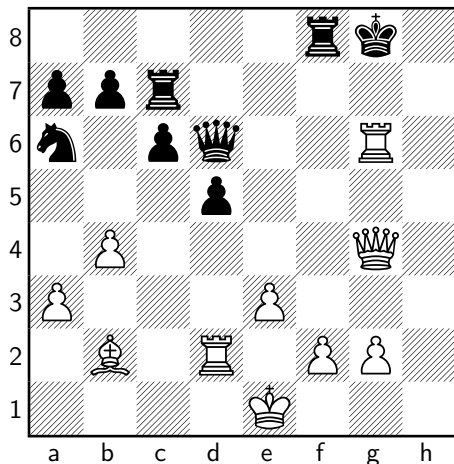
1 - 0



G.M. Marinelli (1.0) - D. Brini (1.0)

15	♖xf3	♗g5
16	h4	♖f6
17	♗g3	O-O
18	♖c7	♘c5
19	♜d1	♜ac8
20	♗a5	♘a6
21	♜d2	♗e7
22	b4	♖c7
23	♗g5	h6
24	♗g4	♖d6
25	d5	g6
26	h5	exd5
27	hxc6	fxg6
28	♜xh6	♜c7
29	♜xg6+	

1 - 0



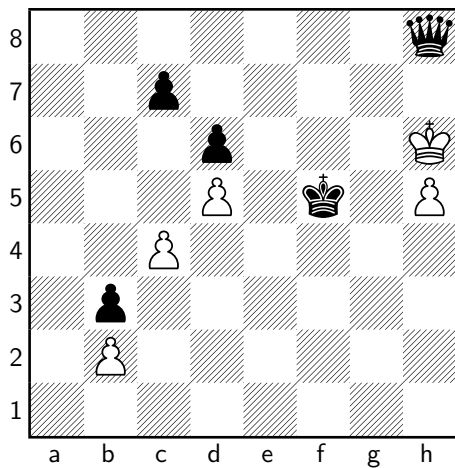
A. Verrelli (0.0) – S. Barbari (0.0)

PARTITA SPAGNOLA (C46)

1	e4	e5
2	♘f3	♘c6
3	♙b5	♙c5
4	♘c3	♘ge7
5	O-O	a6
6	♙a4	♘g6
7	d3	h6
8	♙b3	O-O
9	♙e3	♙xe3
10	fxe3	♘a5
11	♙a4	b5

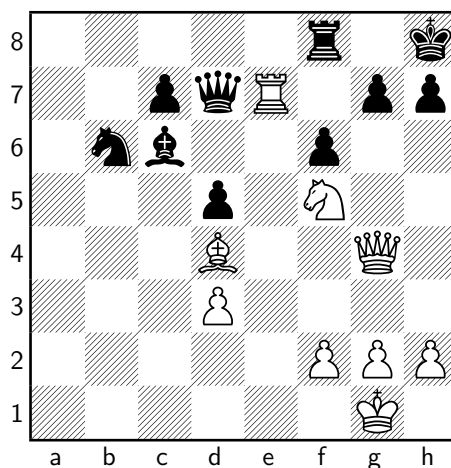
12	♙b3	♘xb3
13	axb3	f5
14	d4	fxe4
15	♘xe4	d6
16	c4	♙b7
17	d5	♗e7
18	♗d3	b4
19	♘fd2	♜xf1+
20	♘xf1	♜f8
21	♘fg3	♘h4
22	♜f1	♜xf1+
23	♗xf1	♙c8
24	♘f2	♗g5
25	e4	♗e3
26	♗d3	♗c1+
27	♗d1	♗xd1+
28	♘xd1	♙g4
29	♙e3	♙d7
30	♘gf5	♙xf5
31	exf5	♙f7
32	g3	♘f3+
33	♙f2	♘d4
34	h3	♘xb3
35	♘c2	a5
36	♙e3	♘c5
37	♙d2	♘e4+
38	♙c1	♘xg3
39	♙b1	♘xf5
40	♘e1	♙f6
41	♙a2	e4
42	♙b3	♘d4+
43	♙a2	e3
44	♙b1	♙f5
45	♘g2	e2
46	♙c1	♙e4
47	♙d2	♙f3
48	♘e1+	♙f2
49	h4	♘b3+
50	♙c2	♙xe1
51	♙xb3	♙d1
52	♙a4	e1♗
53	♙xa5	b3+
54	♙b5	♗e3
55	♙c6	♗c5+
56	♙d7	♙e2
57	h5	♙f3
58	♙e6	♙f4
59	♙f7	♙f5
60	♙xg7	♗d4+
61	♙xh6	♗h8#

0 - 1



28 ♘f5 ♖c5
 29 ♙e3 ♖c6
 30 ♗g4 ♗d7
 31 ♙d4 ♜f8
 32 ♜e1 ♙c6
 33 ♜e7

1 - 0



A. Bruni (0.0) - M. Vaccari (0.0)

PARTITA ITALIANA (C55)

1	e4	e5
2	♘f3	♘c6
3	♙c4	♘f6
4	d3	♙e7
5	O-O	O-O
6	♜e1	a6
7	♘bd2	b5
8	♙d5	♘xd5
9	exd5	♘b4
10	♘xe5	♙b7
11	c4	d6
12	a3	♘xd5
13	♘ef3	♘b6
14	cxb5	axb5
15	♘f1	♗d7
16	♘g3	b4
17	♘d4	♙f6
18	♘df5	♗c6
19	♘e4	d5
20	♘xf6+	♗xf6
21	♗h5	bxa3
22	♘e7+	♙h8
23	♙g5	♗xb2
24	♜eb1	♗d4
25	♗e2	♜fe8
26	♜xa3	f6
27	♜xa8	♜xa8

3° turno (14/12/2019 h. 15:00) G. Franchini (1.5) – G.M. Marinelli (2.0)

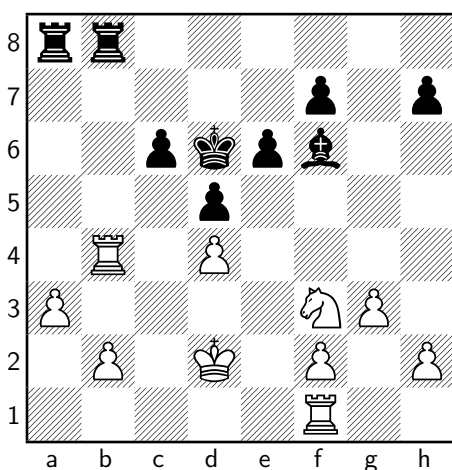
W. Paoli (2.0) – L. Tazzioli (2.0)

DIFESA MODERNA (B06)

ATTACCO TORRE (D03)

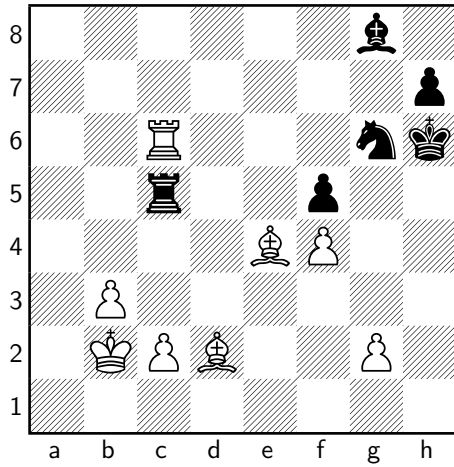
1	♘f3	d5
2	d4	♘f6
3	♙g5	c5
4	♙xf6	gxf6
5	c3	♘c6
6	♘bd2	♖b6
7	♖b3	c4
8	♖xb6	axb6
9	e4	e6
10	e5	fxe5
11	♘xe5	b5
12	♘xc6	bxc6
13	a3	b4
14	cxb4	♙xb4
15	♖c1	♙d6
16	g3	♙e7
17	♙g2	♙f6
18	♖xc4	♙a6
19	♖b4	♚e7
20	♘f3	♚d6
21	♚d2	♙b5
22	♙f1	♙xf1
23	♖xf1	♖hb8

1/2 – 1/2



1	e4	d6
2	d4	g6
3	♘c3	♙g7
4	♙e3	♘d7
5	♖d2	e5
6	♘f3	♘e7
7	h4	exd4
8	♙xd4	♘f6
9	h5	gxf5
10	♖g5	♘g6
11	♘d5	♘xd5
12	♖xd8+	♚xd8
13	♙xg7	♖g8
14	♙h6	♘b4
15	♘d4	♘c6
16	♘xc6+	bxc6
17	♖xh5	♙g4
18	♖g5	♙e6
19	O-O-O	f6
20	♖g3	♚e7
21	♙e2	♘e5
22	♙f4	♖xg3
23	♙xg3	a5
24	♖h1	♙g8
25	f4	♘g6
26	♙g4	a4
27	♙f5	♖a5
28	♙e1	♖c5
29	♙d2	♚f7
30	♖h3	♚g7
31	♖a3	♖c4
32	b3	axb3
33	axb3	♖c5
34	♚b2	d5
35	♖a7	dxe4
36	♖xc7+	♚h6
37	♙xe4	f5
38	♖xc6	

1 – 0



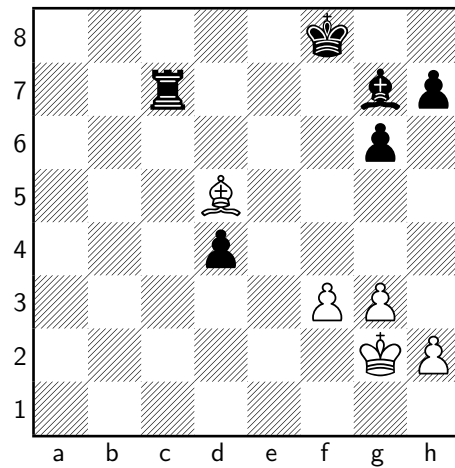
29 ♖d3 ♘xd1
 30 ♘xd1 c6
 31 g3 ♖a7
 32 ♘g2 ♜b8
 33 ♖e3 ♖d7
 34 ♖f4 ♜b2
 35 ♘a4 ♖e6
 36 ♘d1 ♖e1
 37 ♖b8+ ♜xb8
 38 ♘xe1 ♜b1
 39 ♘a4 ♜xe1
 40 ♘xc6 d4
 41 ♘d5+ ♘f8
 42 c6 ♜c1
 43 c7 ♜xc7

0 - 1

S. Mammi (1.0) – E. Giuntini (1.5)

DIFESA EST INDIANA (E94)

1	c4	e5
2	♘c3	♘f6
3	♘f3	d6
4	e4	g6
5	♘e2	♘g7
6	d4	exd4
7	♘xd4	O-O
8	O-O	♜e8
9	f3	a5
10	♘e3	♘a6
11	♜b1	♘c5
12	b3	♘e6
13	♖d2	b6
14	♜fd1	♘b7
15	a3	♘d7
16	♘d5	♘b8
17	b4	♘c6
18	♘xc6	♘xc6
19	♜bc1	axb4
20	axb4	♜a3
21	♘f4	♖a8
22	♘xe6	fxe6
23	c5	bxc5
24	bxc5	d5
25	exd5	exd5
26	♘f2	♜a2
27	♜c2	♜xc2
28	♖xc2	♘a4



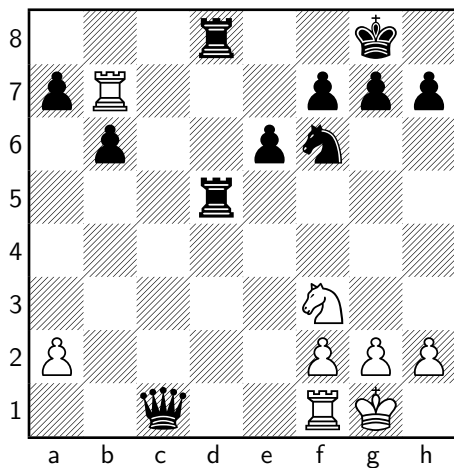
D. Brini (1.0) – S. Marinelli (1.0)

DIFESA CARO-KANN (B13)

1	e4	c6
2	d4	d5
3	exd5	cxd5
4	c4	♘f6
5	♘c3	♘c6
6	♘f4	dxg4
7	♘xc4	e6
8	♘f3	♘d6
9	♘xd6	♖xd6
10	O-O	O-O
11	♖d2	b6

12	♖ac1	♜b7
13	♖fd1	♖fd8
14	d5	♞a5
15	♞b5	♞xc4
16	♖xc4	♞d7
17	♖c7	♞xb5
18	♖xb7	♖xd5
19	♞c2	♞xb2
20	♞c1	♖ad8
21	♖f1	♞xc1

0 - 1



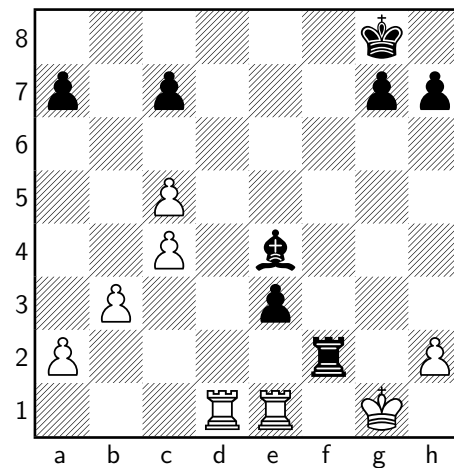
M.V. Galli (1.0) – S. Garofalo (1.0)

GAMBETTO DI RE ACCETTATO (C35)

1	e4	e5
2	f4	exf4
3	♞f3	♜e7
4	d4	♜h4+
5	♞e2	f5
6	e5	d6
7	♜xf4	dxe5
8	♜xe5	♜f6
9	♞f2	♜xe5
10	♞e1	♞e7
11	♞xe5	♞xe5
12	♞xe5	♞f6
13	♞c3	♞e4+
14	♞xe4	fxe4
15	♜c4	♞c6
16	♞xc6	bxc6

17	♖he1	♜f5
18	♜d3	O-O
19	♜e2	♖ad8
20	c3	c5
21	dxc5	♖d2
22	b3	♖c2
23	c4	e3+
24	♞g1	♜e4
25	♖ad1	♖f2
26	♜f1	♖xf1+
27	♞xf1	♖f2+
28	♞g1	♖xg2+
29	♞f1	♖f2+
30	♞g1	

1/2 - 1/2

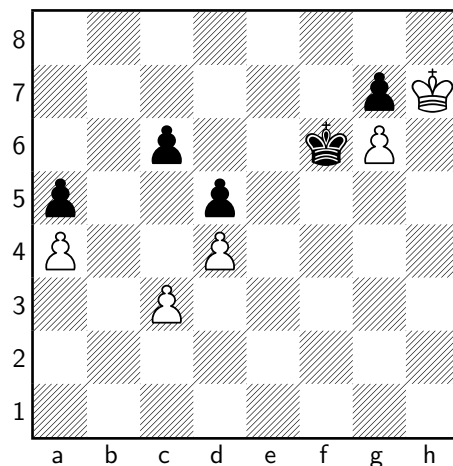


S. Barbari (1.0) – A. Castelli (1.0)

DIFESA RUSSA (C42)

1	e4	e5
2	♞f3	♞f6
3	♞c3	♜b4
4	d3	♞c6
5	♜d2	d6
6	♞d5	♜xd2+
7	♞xd2	♞xd5
8	exd5	♞e7
9	d4	e4
10	♞g5	♞xd5
11	♞xe4	O-O
12	O-O-O	♖e8

13	♙d3	♘f6
14	f3	♘xe4
15	♙xe4	d5
16	♙d3	a5
17	g4	♖f6
18	♗df1	♜h8
19	c3	b6
20	g5	♖d6
21	♗e1	♙d7
22	f4	b5
23	♗e5	b4
24	♗he1	bxc3
25	bxc3	♖a3+
26	♖b2	♖xb2+
27	♜xb2	♗ab8+
28	♜c1	f6
29	♗xe8+	♗xe8
30	♗xe8+	♙xe8
31	♜d2	f×g5
32	f×g5	h6
33	h4	♜g8
34	♜e3	♜f8
35	♜f4	♜e7
36	♜e5	h×g5
37	h×g5	c6
38	♙f5	♙h5
39	♙c8	♙e8
40	♙f5	♙h5
41	a3	♙e8
42	♙c8	♙d7
43	♙xd7	♜xd7
44	♜f5	♜e7
45	♜g6	♜f8
46	♜h7	♜f7
47	g6+	♜f6
48	a4	



D. Hodo (0.0) – A. Bruni (1.0)

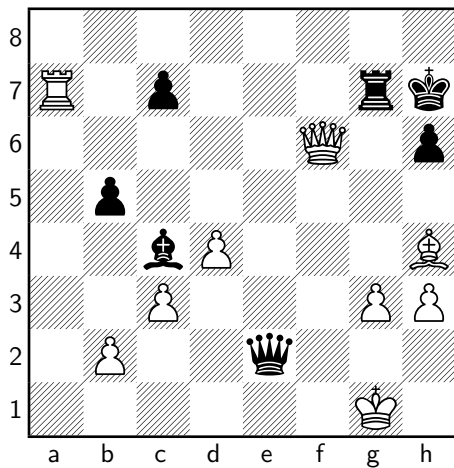
PARTITA SPAGNOLA (C84)

1	e4	e5
2	♘f3	♘c6
3	♙b5	a6
4	♙a4	♘f6
5	O-O	b5
6	♙b3	♙e7
7	d3	O-O
8	c3	h6
9	♘bd2	♙c5
10	♘xe5	♙xf2+
11	♗xf2	♘xe5
12	♘f3	d6
13	h3	♙e6
14	♙c2	♖d7
15	d4	♘xf3+
16	♖xf3	d5
17	e5	♘e4
18	♙xe4	dxe4
19	♖xe4	♗ae8
20	♙f4	♙d5
21	♖c2	♗e6
22	a4	♗g6
23	♜h2	♖c6
24	axb5	axb5
25	♙g3	♙e4
26	♖e2	♙d5
27	♙h4	f6
28	exf6	g×f6

1 – 0

29 ♖h5 ♔h7
 30 g3 ♜fg8
 31 ♜f5 ♙c4
 32 ♖f3 ♖e6
 33 ♜a7 ♜8g7
 34 ♜xf6 ♜xf6
 35 ♖xf6 ♖e2+
 36 ♔g1 ♖e1+
 37 ♔h2 ♖e2+
 38 ♔g1 ♖e1+
 39 ♔h2 ♖e2+
 40 ♔g1

1/2 - 1/2

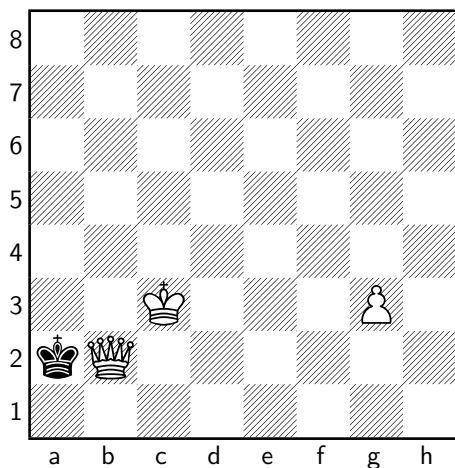


J. Hodo (0.0) – A. Verrelli (0.0)
 GAMBETTO DI DONNA ACCETTATO (D20)

1 d4 d5
 2 c4 dxc4
 3 e3 ♘f6
 4 ♙xc4 ♙f5
 5 ♘c3 e6
 6 ♖b3 ♖c8
 7 ♘f3 g6
 8 ♘h4 ♙g7
 9 ♘xf5 exf5
 10 ♙xf7+ ♔f8
 11 ♙e6 ♘bd7
 12 ♘d5 ♜b8
 13 ♘xf6 ♙xf6
 14 ♖a3+ ♔e8

15 ♖xa7 ♜a8
 16 ♙xd7+ ♔xd7
 17 ♖c5 ♙e7
 18 ♖c4 ♖g8
 19 ♖xg8 ♜hxg8
 20 ♙d2 b6
 21 a3 ♜gf8
 22 O-O ♜f6
 23 ♜ac1 ♜c6
 24 ♜xc6 ♔xc6
 25 ♜c1+ ♔d5
 26 ♜xc7 ♙e8
 27 ♜d7+ ♔c4
 28 ♜b7 ♔b5
 29 ♜c7+ ♔d3
 30 ♙b4 ♙xb4
 31 axb4 ♜h8
 32 ♜c5 ♜b8
 33 d5 ♜a8
 34 g3 ♔e4
 35 ♜xb5 ♔f3
 36 ♜a5 ♜c8
 37 ♜a1 ♜d8
 38 ♜d1 ♔e4
 39 d6 ♔e5
 40 d7 ♔e6
 41 b5 ♜xd7
 42 ♜xd7 ♔xd7
 43 ♔g2 ♔c7
 44 ♔f3 ♔b6
 45 ♔f4 ♔xb5
 46 ♔g5 ♔c4
 47 ♔h6 ♔b3
 48 ♔xh7 ♔xb2
 49 ♔xg6 ♔c3
 50 h4 ♔c4
 51 h5 ♔d3
 52 h6 ♔e2
 53 h7 ♔xf2
 54 h8♖ ♔xe3
 55 ♖e5+ ♔f3
 56 ♖f4+ ♔e2
 57 ♔xf5 ♔d3
 58 ♖e4+ ♔c3
 59 ♔e5 ♔d2
 60 ♖f3 ♔c2
 61 ♔d4 ♔b2
 62 ♖c3+ ♔a2
 63 ♖b4 ♔a1
 64 ♔c3 ♔a2

65 ♔b2#
1 - 0



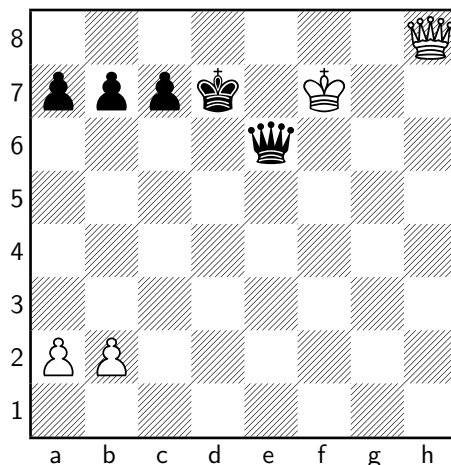
26 ♖xf7 ♖xf7
27 ♖xf7 ♖xe4
28 ♖h7 ♘f4
29 ♘g1 ♘e2+
30 ♘f2 ♘xd4
31 cxd4 ♖xd4
32 ♖xh6 ♖xd5
33 ♘e3 ♖e5+
34 ♘f4 ♘d7
35 h4 ♖e6
36 ♘g5 ♖xh6
37 ♘xh6 d5
38 ♘g6 d4
39 h5 d3
40 h6 d2
41 h7 d1♖
42 h8♖ ♖g4+
43 ♘f7 ♖e6+

0 - 1

M. Vaccari (0.0) - L. Vaccari (0.0)

PARTITA ITALIANA (C50)

1 e4 e5
2 ♘f3 ♘c6
3 ♙c4 ♙c5
4 O-O d6
5 d3 h6
6 ♘bd2 ♙g4
7 ♘b3 ♙b6
8 c3 ♖f6
9 ♙e3 ♙xf3
10 ♖xf3 ♖xf3
11 gxf3 ♙xe3
12 fxe3 ♘ge7
13 ♖ad1 ♖f8
14 d4 exd4
15 exd4 O-O-O
16 d5 ♘e5
17 ♙e2 g5
18 ♘d4 ♘d7
19 f4 gxf4
20 ♖xf4 ♘g6
21 ♖f2 ♘b8
22 ♖df1 ♘de5
23 ♘h1 ♖de8
24 ♙h5 ♘c8
25 ♙xg6 ♘xg6



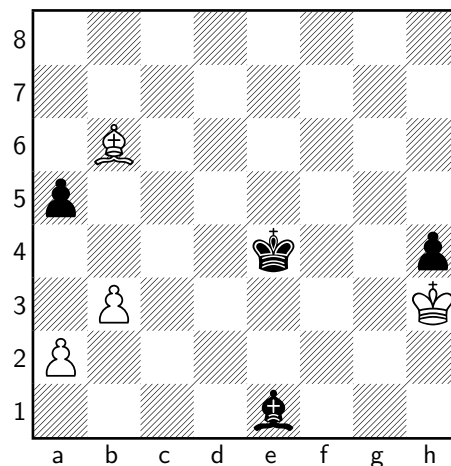
4° turno (15/12/2019 h. 9:00)

L. Tazzioli (2.5) – G. Franchini (2.5)

DIFESA SICILIANA (B40)

1	e4	e6
2	d3	c5
3	♘f3	♘c6
4	d4	cxd4
5	♘xd4	♘f6
6	♘c3	♖c7
7	♘db5	♖b8
8	♙g5	a6
9	♘d4	♘xe4
10	♘xc6	♘xc3
11	♘xb8	♘xd1
12	♘xa6	bxa6
13	♚xd1	d5
14	♙e2	♚b8
15	b3	f6
16	♙e3	♙b4+
17	♚f1	♙b7
18	c4	♚e7
19	cxd5	♙xd5
20	♙f3	♙xf3
21	gxf3	♚hc8
22	♚g1	g6
23	♚g4	e5
24	♚h4	h5
25	f4	♚e6
26	fxe5	fxe5
27	♚h3	♚d8
28	♚xd8	♚xd8
29	♚h4	a5
30	♚e2	♚f5
31	♚c4	♚d7
32	♚c2	♚d5
33	♚c4	e4
34	♚d4	♚xd4
35	♙xd4	g5
36	f3	exf3+
37	♚xf3	g4+
38	♚g2	♚e4
39	♙b6	h4
40	h3	g×h3+
41	♚×h3	♙e1

1/2 – 1/2



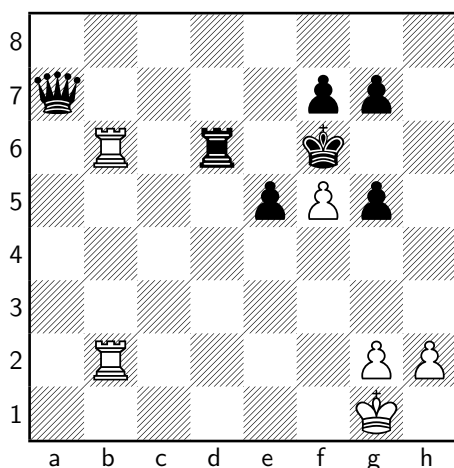
E. Giuntini (2.5) – W. Paoli (2.5)

DIFESA SCANDINAVA (B01)

1	e4	d5
2	exd5	♖xd5
3	♘c3	♖d6
4	d4	♘f6
5	♙c4	a6
6	♙b3	♘c6
7	♘ge2	e6
8	♙f4	♖d7
9	a3	♙d6
10	♖d2	♙xf4
11	♖xf4	O-O
12	O-O	♘e7
13	♘e4	♘xe4
14	♖xe4	♚b8
15	c3	b6
16	♙c2	♘g6
17	♘f4	♙b7
18	♖d3	♚fd8
19	♘×g6	h×g6
20	♚ad1	♖d5
21	f3	♖g5
22	♖e2	♚d7
23	♙e4	♙xe4
24	f×e4	e5
25	d5	a5
26	c4	♚bd8
27	♚d3	♚d6
28	b4	axb4

29 axb4 ♖e7
 30 ♜c3 ♜f6
 31 ♜b1 ♜a8
 32 c5 bxc5
 33 bxc5 ♖d7
 34 ♜cb3 ♖a4
 35 ♖d3 g5
 36 d6 cxd6
 37 cxd6 ♜d8
 38 ♜b6 ♖a2
 39 ♜1b2 ♖a7
 40 ♖a6 ♜dxd6
 41 ♖c8+ ♜h7
 42 ♖h3+ ♜g6
 43 ♖f5+ ♜xf5
 44 exf5+ ♜f6

0 - 1



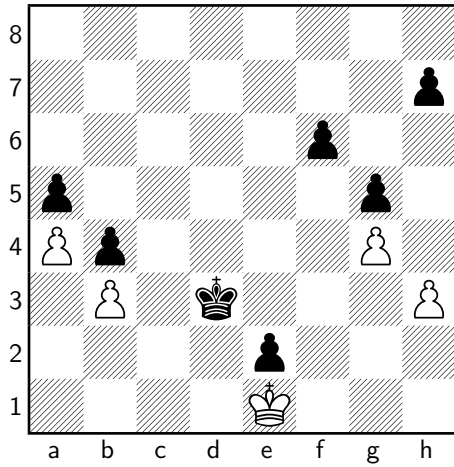
S. Marinelli (2.0) – S. Barbari (2.0)

ATTACCO TROMPOWSKY (D00)

1 d4 ♘f6
 2 ♘g5 d5
 3 ♘xf6 gxf6
 4 ♘f3 ♘h6
 5 g3 ♘c6
 6 ♘g2 ♘f5
 7 c3 ♖d7
 8 ♘bd2 O-O-O
 9 ♖a4 e5
 10 e3 ♜b8

11 h3 ♘xd4
 12 ♖xd7 ♘xf3+
 13 ♘xf3 ♘xd7
 14 O-O-O ♘e6
 15 g4 c5
 16 b3 ♜d6
 17 ♜d2 ♜hd8
 18 ♜hd1 d4
 19 cxd4 cxd4
 20 ♜c2 ♜c7
 21 ♜b2 dxe3
 22 ♜c2+ ♜b8
 23 ♜e1 exf2
 24 ♜xf2 ♘f4
 25 ♜fe2 ♘d2
 26 ♜f1 ♘f4
 27 ♜c2 ♜c8+
 28 ♜b2 ♘d7
 29 ♜c2 ♜xc2+
 30 ♜xc2 ♘b5
 31 ♜d1 ♜xd1
 32 ♜xd1 ♘c6
 33 ♜e2 ♜c7
 34 ♘h4 ♘xg2
 35 ♘xg2 ♘g5
 36 ♘e1 ♜c6
 37 ♘f3 ♜d5
 38 ♘xg5 fxg5
 39 ♜d3 b5
 40 a3 a5
 41 a4 b4
 42 ♜e3 e4
 43 ♜e2 ♜d4
 44 ♜d2 e3+
 45 ♜e2 f6
 46 ♜d1 ♜d3
 47 ♜e1 e2

0 - 1



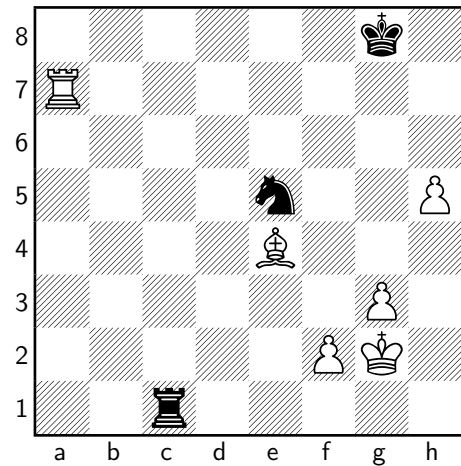
29 ♖c7 ♘d3
 30 ♗e7 e5
 31 ♕d2 ♜b8
 32 ♕xd5 e4
 33 ♕c3 ♕xc3
 34 ♘xc3 ♘e1
 35 ♘xe4 fxe4
 36 ♕xe4 ♜c8
 37 ♜xh7+ ♝g8
 38 ♜a7 ♜c1
 39 h4 ♘f3+
 40 ♝g2 ♘e5
 41 h5

1 - 0

G.M. Marinelli (2.0) – S. Garofalo (1.5)

APERTURA RÉTI (A04)

1 ♘f3 f5
 2 d3 ♘f6
 3 c4 g6
 4 ♘c3 ♕g7
 5 g3 c6
 6 ♕g2 O-O
 7 O-O d6
 8 ♜b3 a5
 9 ♕g5 ♜c7
 10 c5+ d5
 11 ♕f4 ♜d8
 12 e4 fxe4
 13 dxe4 a4
 14 ♜c2 a3
 15 ♜ad1 axb2
 16 exd5 ♕f5
 17 ♜b3 b1♜
 18 ♘xb1 cxd5
 19 ♘d4 e6
 20 ♘xf5 gxh5
 21 ♘c3 ♝h8
 22 ♜xb7 ♜a3
 23 ♘b5 ♜xa2
 24 ♜a1 ♜xa1
 25 ♜xa1 ♘e4
 26 ♜a7 ♘d7
 27 ♜xd7 ♜xd7
 28 ♜xd7 ♘xc5

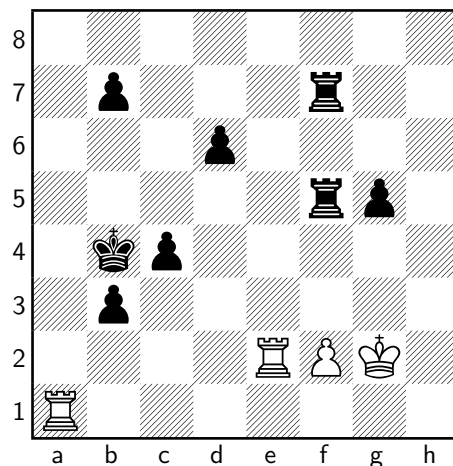


A. Bruni (1.5) – M.V. Galli (1.5)

PARTITA ITALIANA (C53)

1 e4 e5
 2 ♘f3 ♘c6
 3 ♕c4 ♕c5
 4 c3 ♕b6
 5 O-O ♘f6
 6 d3 d6
 7 h3 ♕e6
 8 ♘bd2 ♜d7
 9 ♕xe6 fxe6
 10 ♘c4 h6
 11 ♘xb6 axb6
 12 ♘h4 g5
 13 ♘f3 ♜g8

14	♘h2	♖g7
15	♘g4	♘d7
16	♘xf6+	♖xf6
17	b4	♖g6
18	g4	♜h8
19	♖f3	♜af8
20	♖g3	♖f6
21	♘g2	♘e7
22	d4	exd4
23	cxd4	♖xd4
24	♙e3	♖xe4+
25	♘g1	♖xb4
26	♜fd1	♘d5
27	a3	♖e4
28	♜ac1	♖f3
29	♖h2	♘f4
30	♙xf4	♜xf4
31	♜f1	♖xa3
32	♜ce1	b5
33	♜e3	♖a2
34	♖g2	♖d5
35	♖g3	♜hf8
36	♖h2	♜f3
37	♜e2	♖d3
38	♜fe1	♜xh3
39	♖g2	♖f3
40	♜xe6	♖xg2+
41	♘xg2	♜hf3
42	♜1e2	♜3f4
43	♜xh6	♜xg4+
44	♘f1	♜gf4
45	♜h7+	♜8f7
46	♜h5	♜4f5
47	♘g2	b4
48	♜b2	c5
49	♜h6	♜7f6
50	♜h8	♘c6
51	♜c8+	♘b5
52	♜b8	♜f7
53	♜e2	b3
54	♜a8	♘b4
55	♜a1	c4



L. Vaccari (1.0) – S. Mammi (1.0)

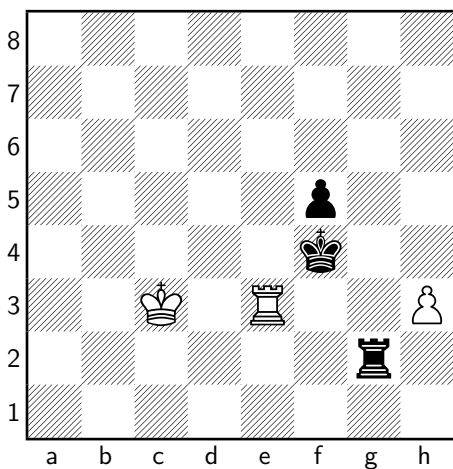
SISTEMA COLLE-ZUKERTORT (D05)

1	d4	♘f6
2	♘f3	d5
3	e3	e6
4	b3	c5
5	♙b2	♘c6
6	♙d3	♙e7
7	♘bd2	O-O
8	O-O	b6
9	c4	♙b7
10	♖c2	♘b4
11	♖b1	♘xd3
12	♖xd3	♘e4
13	♖c2	♜c8
14	♜ad1	♖c7
15	♘xe4	dxe4
16	♘d2	f5
17	f4	♙f6
18	♜de1	cxd4
19	♙xd4	♙xd4
20	exd4	♜cd8
21	♖c3	♖d7
22	♜f2	♖xd4
23	♖xd4	♜xd4
24	♜fe2	♜fd8
25	♘f1	♘f7
26	h3	♙a6
27	♜c2	♜d1
28	♘f2	♜xe1

0 – 1

29 ♖xe1 ♖e7
 30 c5 ♜xf1
 31 ♖xf1 bxc5
 32 ♜xc5 ♖d6
 33 b4 ♜d7
 34 ♜c2 ♜c7
 35 ♜d2+ ♖c6
 36 a4 ♜d7
 37 ♜c2+ ♖b6
 38 ♖e2 ♜d4
 39 ♜b2 ♜d3
 40 ♜c2 ♜a3
 41 a5+ ♖b5
 42 ♜c7 a6
 43 ♜b7+ ♖c4
 44 ♜b6 ♜a2+
 45 ♖f1 ♖d3
 46 ♜xe6 ♖e3
 47 ♖g1 ♜b2
 48 ♜xa6 ♜xb4
 49 ♜a7 ♖xf4
 50 ♜xg7 ♜a4
 51 ♜xh7 ♜a1+
 52 ♖f2 e3+
 53 ♖e2 ♜a2+
 54 ♖f1 ♜xa5
 55 ♜e7 ♜a1+
 56 ♖e2 ♜a2+
 57 ♖d3 ♜d2+
 58 ♖c3 ♜xg2
 59 ♜xe3

0 - 1

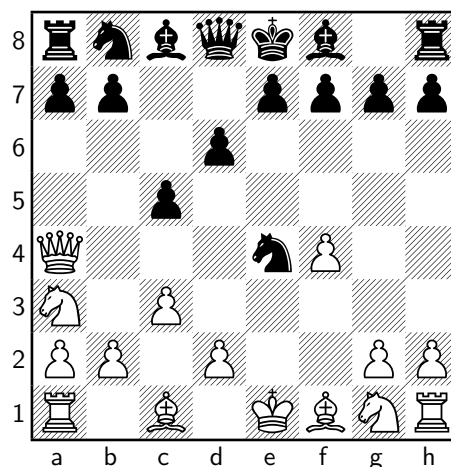


A. Castelli (1.0) – D. Brini (1.0)

DIFESA SICILIANA (B20)

1 e4 c5
 2 ♘a3 d6
 3 f4 ♘f6
 4 c3 ♘xe4
 5 ♖a4+

1 - 0



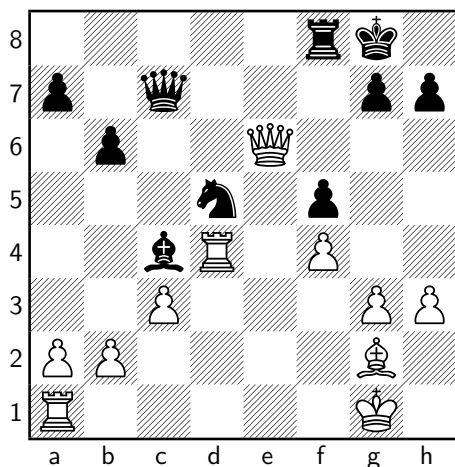
D. Hodo (0.5) – J. Hodo (1.0)

DIFESA SICILIANA (B24)

1 e4 c5
 2 ♘c3 e6
 3 g3 ♘c6
 4 ♜g2 ♘f6
 5 d3 ♜e7
 6 ♘ge2 O-O
 7 O-O d5
 8 f4 dxe4
 9 ♘xe4 ♖d7
 10 ♜e3 b6
 11 h3 ♜b7
 12 ♖d2 ♘d5
 13 ♜f2 f6
 14 d4 cxd4
 15 ♘xd4 ♘xd4
 16 ♜xd4 ♜ad8
 17 c3 ♜a6

18	♖fd1	♜c8
19	♔e1	f5
20	♘d2	♙c5
21	♘f3	♙xd4+
22	♜xd4	♜c4
23	♘e5	♔c7
24	♘xc4	♙xc4
25	♔xe6+	

1 - 0



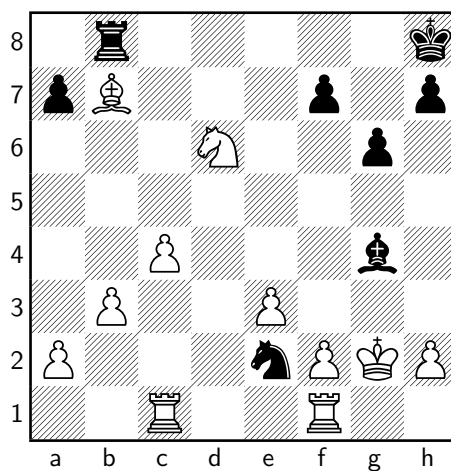
5° turno (15/12/2019 h. 14:30)

W. Paoli (3.5) – G.M. Marinelli (3.0)

ATTACCO EST INDIANO – DIFESA EST INDIANA (E67)

1	♘f3	♘f6
2	g3	g6
3	♙g2	♙g7
4	O-O	O-O
5	c4	c6
6	♘c3	d6
7	d4	♘bd7
8	b3	♔c7
9	♙b2	e5
10	♜c1	♜e8
11	e3	♘f8
12	d5	♙g4
13	dxc6	e4
14	cxb7	♔xb7
15	♘xe4	♘xe4
16	♙xg7	♙xg7
17	♔d4+	♙g8
18	♘d2	♙f5
19	g4	♘e6
20	♘xe4	♘xd4
21	♘f6+	♙h8
22	♙xb7	♘e2+
23	♙g2	♜ab8
24	♘xe8	♙xg4
25	♘xd6	

1 - 0



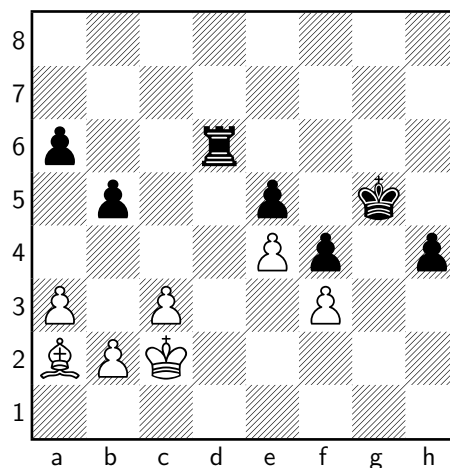
S. Barbari (3.0) – L. Tazzioli (3.0)

DIFESA SCANDINAVA (B01)

1	e4	d5
2	exd5	♖xd5
3	♘c3	♖a5
4	♙c4	♘f6
5	d3	♙g4
6	♘f3	c6
7	♙f4	e6
8	♖d2	♙xf3
9	gxf3	♙b4
10	a3	♘bd7
11	O-O-O	♙xc3
12	♖xc3	♖f5
13	♖d2	♘e5
14	♙xe5	♖xe5
15	♗de1	♖d6
16	♖g5	♗g8
17	♖g3	O-O-O
18	♗e5	g6
19	♗he1	♘h5
20	♖g5	♖d4
21	♖e3	♙b8
22	c3	♖f4
23	♗h1	♗d6
24	d4	♖h4
25	♗e4	♖f6
26	♗g1	♗gd8
27	♗g5	♘g7
28	♗ge5	h5
29	♙b3	♘f5
30	♖d2	♘h4
31	♗f4	♖xe5
32	♗xh4	c5
33	♖e3	♖f6
34	♗f4	cx d4
35	♗xf6	dxe3
36	fxe3	♗8d7
37	♗f4	a6
38	h4	♙c7
39	♗d4	♙d8
40	♙a4	b5
41	♙c2	♙e7
42	♙e4	f5
43	♙c2	e5
44	♗xd6	♗xd6
45	♙b1	f4
46	e4	♙f6

47	♙c2	g5
48	h×g5+	♙×g5
49	♙a2	h4

0 – 1

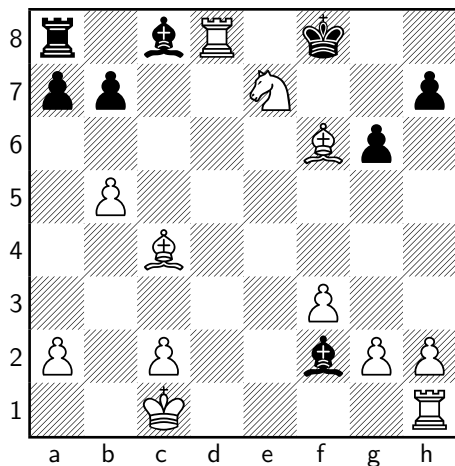


G. Franchini (3.0) – M.V. Galli (2.5)

PARTITA SCOZZESE (C45)

1	e4	e5
2	♘f3	♘c6
3	d4	exd4
4	♘xd4	♙c5
5	♘f5	♖f6
6	♘c3	♘ge7
7	♖g4	g6
8	♙g5	♖e5
9	♘xe7	♙xe7
10	♙f4	♖e6
11	♖xe6	f×e6
12	♙xc7	d6
13	O-O-O	O-O
14	f3	d5
15	exd5	exd5
16	♘xd5	♙c5
17	♙c4	♙h8
18	b4	♙f2
19	b5	♘d8
20	♙e5+	♗f6
21	♙xf6+	♙g8
22	♘e7+	♙f8
23	♗xd8#	

1 - 0



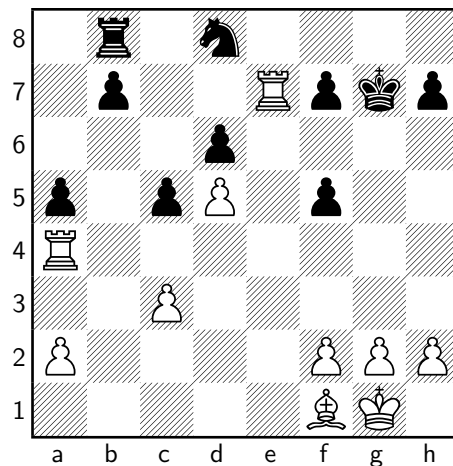
E. Giuntini (2.5) - A. Castelli (2.0)

DIFESA RUSSA (C42)

1	e4	e5
2	♘f3	♘f6
3	♘xe5	d6
4	♘c4	♘xe4
5	♘c3	♖e7
6	♗e2	♘xc3
7	bxc3	♗xe2+
8	♙xe2	♙e7
9	O-O	O-O
10	d4	♙f5
11	♘e3	♙g6
12	♙f3	♘c6
13	♖b1	♖ab8
14	♖e1	♙f6
15	♙d2	♘d8
16	♘d5	♙xc2
17	♖b2	♙g6
18	♘xf6+	gxf6
19	♙h6	c6
20	♙xf8	♙xf8
21	d5	c5
22	♖be2	♙d3
23	♖e8+	♙g7
24	♙e2	♙f5
25	♙f1	♙d7
26	♖8e4	f5
27	♖h4	a5

28 ♖e7 ♙a4
29 ♖xa4

1 - 0

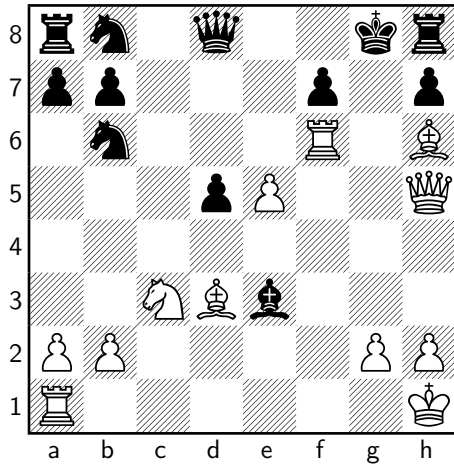


S. Mammi (2.0) - S. Marinelli (2.0)

APERTURA INGLESE (A16)

1	c4	c6
2	♘c3	♘f6
3	e4	e5
4	♘f3	d6
5	♙e2	♙e7
6	O-O	O-O
7	d3	♙e6
8	d4	exd4
9	♘xd4	d5
10	cxd5	cxd5
11	e5	♘fd7
12	f4	♘b6
13	f5	♙c8
14	f6	gxf6
15	♙d3	♙g7
16	♗h5	♖h8
17	♙h6+	♙g8
18	♘f5	♙xf5
19	♖xf5	♙c5+
20	♙h1	♙e3
21	♖xf6	

1 - 0



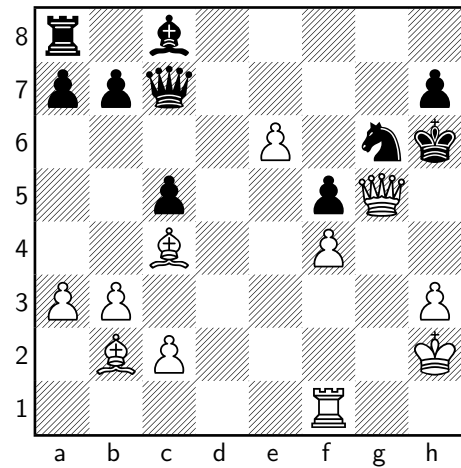
S. Garofalo (1.5) – A. Bruni (1.5)

PARTITA DI DONNA (D02)

1	d4	d5
2	♘f3	♘f6
3	♘bd2	e6
4	a3	♙e7
5	e3	O-O
6	♙d3	♘bd7
7	b3	♚e8
8	♙b2	♘f8
9	O-O	♘g6
10	♗e2	c5
11	♘e5	♘xe5
12	dxe5	♘d7
13	f4	f5
14	h3	♘f8
15	♙h2	d4
16	♚ad1	♘g6
17	g4	dxe3
18	♘c4	♗c7
19	gxf5	exf5
20	♘xe3	♚f8
21	♙c4+	♙h8
22	♘d5	♗b8
23	♘xe7	♘xe7
24	♚d6	♘c6
25	♗h5	♗c7
26	♚g6	♘e7
27	♚xg7	♙xg7
28	e6+	♚f6

29	♗f7+	♙h6
30	♗xf6+	♘g6
31	♗g5#	

1 – 0

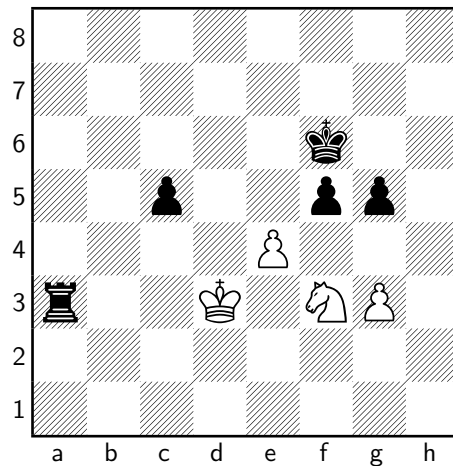


L. Vaccari (1.0) – D. Hodo (1.5)

ATTACCO EST INDIANO – DIFESA EST INDIANA (E67)

1	d4	♘f6
2	♘f3	g6
3	g3	♙g7
4	♙g2	d6
5	O-O	O-O
6	c4	c6
7	♘c3	♘bd7
8	♙f4	♗c7
9	♚c1	e5
10	dxe5	dxe5
11	♙e3	♘g4
12	♙d2	f5
13	h3	♘gf6
14	e3	a5
15	♗c2	♘c5
16	♚fe1	e4
17	♘d4	♘d3
18	♘a4	♘xe1
19	♚xe1	♚e8
20	c5	♘d5
21	♙h2	♙d7
22	♘e2	♘b4
23	♙xb4	axb4

24 b3 ♘e6
 25 ♖f4 ♘f7
 26 ♘f1 g5
 27 ♖g2 ♖ad8
 28 ♘c4 ♘xc4
 29 ♖xc4+ ♖h8
 30 ♖xb4 ♖d3
 31 ♖c4 ♖ed8
 32 ♖b6 ♖e7
 33 ♖a4 ♖d2
 34 ♖e2 ♖xe2
 35 ♖xe2 ♖d7
 36 ♖h5 h6
 37 ♖g6 ♖e8
 38 ♖b6 ♖e6
 39 ♖h5 ♘f8
 40 ♖c4 ♘xc5
 41 h4 ♖g8
 42 ♖e5 ♖g7
 43 f4 exf3
 44 ♖xf3 ♖g6
 45 ♖xg6 ♖xg6
 46 hxg5 hxg5
 47 ♖e5 ♖h6+
 48 ♖g1 ♖g7
 49 ♖f2 ♖e6
 50 ♖d3 ♘d6
 51 b4 b6
 52 ♖ge1 c5
 53 bxc5 ♘xc5
 54 ♖xc5 bxc5
 55 ♖e2 ♖a6
 56 ♖d3 ♖xa2
 57 ♖f3 ♖f6
 58 e4 ♖a3+



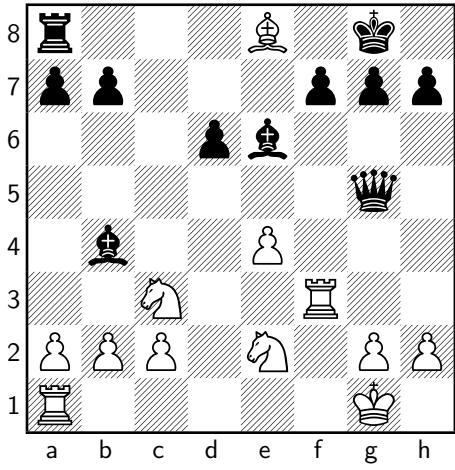
J. Hodo (1.0) – M. Vaccari (1.0)

ATTACCO TROMPOWSKY (A45)

1 d4 ♖f6
 2 ♘g5 c5
 3 dxc5 ♖a5+
 4 ♖c3 ♖e4
 5 ♘d2 ♖xd2
 6 ♖xd2 e5
 7 e4 ♘xc5
 8 ♖g5 O-O
 9 ♘d3 ♘b4
 10 ♖e2 ♖c6
 11 O-O ♖e8
 12 f4 d6
 13 fxex5 ♖xe5
 14 ♘b5 ♘e6
 15 ♘xe8 ♖f3+
 16 ♖xf3 ♖xg5

0 – 1

0 – 1



Classifica finale

Pos	N	Title	NAME	Rtg	Fed	Pts	Buc1	BucT	ARO.
1	3	CM	PAOLI Walter	1936	MO	4.5	13.0	15.0	1775.4
2	2	CM	TAZZIOLI Luca	2082	MO	4.0	14.5	17.0	1774.4
3	1	FM	FRANCHINI Gabriele	2230	MO	4.0	13.5	16.0	1770.2
4	6	1N	GIUNTINI ENRICO	1812	MO	3.5	14.0	15.0	1788.0
5	4	CM	MARINELLI Gian Marco	1865	MO	3.0	14.0	15.5	1815.8
6	13	NC	BARBARI SAMUEL	1406	MO	3.0	11.5	12.5	1654.8
7	5	1N	MAMMI SAMUELE	1814	MO	3.0	11.0	12.0	1604.4
8	11	3N	GALLI MARIA VITTORIA	1486	MO	2.5	12.0	13.0	1744.4
9	8	CM	GAROFALO Sergio	1700	MO	2.5	11.5	13.0	1599.2
10	10	2N	HODO DIONIS	1606	MO	2.5	9.0	10.0	1571.8
11	12	3N	MARINELLI Sofia	1418	MO	2.0	12.0	13.0	1662.0
12	9	2N	CASTELLI Antonio	1613	MO	2.0	11.5	12.5	1580.2
13	17	NC	VACCARI MARCO	1330	MO	2.0	6.0	6.5	1439.2
14	14	NC	BRUNI ALESSANDRO	1379	MO	1.5	11.0	12.5	1587.2
15	16	3N	VACCARI LUIGI	1331	MO	1.0	10.0	11.5	1608.6
16	15	NC	HODO JONIAN	1347	MO	1.0	10.0	11.0	1492.4
17	7	1N	BRINI DARIO (W)	1807	BO	1.0	9.5	10.5	1556.8
18	18	NC	VERRELLI ANTONIO	1296	MO	1.0	8.0	8.0	1455.3

Tie Break legend:

Buc1 = Buchholz Cut 1

BucT = Buchholz Total

ARO. = Average Rating Opponents

Tabellone

Pos	NAME	Rtg	T	Fed	Pts	1	2	3	4	5	Buc1	BucT	ARO.
1	PAOLI Walter	1936	CM	MO	4.5	+W11	+B9	=W2	+B4	+W5	13.0	15.0	1775.4
2	TAZZIOLI Luca	2082	CM	MO	4.0	+B8	+W7	=B1	=W3	+B6	14.5	17.0	1774.4
3	FRANCHINI Gabriele	2230	FM	MO	4.0	+W10	=B4	+W5	=B2	+W8	13.5	16.0	1770.2
4	GIUNTINI ENRICO	1812	1N	MO	3.5	+B16	=W3	+B7	-W1	+W12	14.0	15.0	1788.0
5	MARINELLI Gian Marco	1865	CM	MO	3.0	+B6	+W17	-B3	+W9	-B1	14.0	15.5	1815.8
6	BARBARI SAMUEL	1406	NC	MO	3.0	-W5	+B18	+W12	+B11	-W2	11.5	12.5	1654.8
7	MAMMI SAMUELE	1814	1N	MO	3.0	+W14	-B2	-W4	+B15	+W11	11.0	12.0	1604.4
8	GALLI MARIA VITTORIA	1486	3N	MO	2.5	-W2	+B15	=W9	+B14	-B3	12.0	13.0	1744.4
9	GAROFALO Sergio	1700	CM	MO	2.5	+B13	-W1	=B8	-B5	+W14	11.5	13.0	1599.2
10	HODO DIONIS	1606	2N	MO	2.5	-B3	--	=W14	+W16	+B15	9.0	10.0	1571.8
11	MARINELLI Sofia	1418	3N	MO	2.0	-B1	+W16	+B17	-W6	-B7	12.0	13.0	1662.0
12	CASTELLI Antonio	1613	2N	MO	2.0	+W18	--	-B6	+W17	-B4	11.5	12.5	1580.2
13	VACCARI MARCO	1330	NC	MO	2.0	-W9	-B14	-W15	+BYE	+B16	6.0	6.5	1439.2
14	BRUNI ALESSANDRO	1379	NC	MO	1.5	+B7	+W13	=B10	-W8	-B9	11.0	12.5	1587.2
15	VACCARI LUIGI	1331	3N	MO	1.0	-B17	-W8	+B13	-W7	-W10	10.0	11.5	1608.6
16	HODO JONIAN	1347	NC	MO	1.0	-W4	-B11	+W18	-B10	-W13	10.0	11.0	1492.4
17	BRINI DARIO	1807	1N	BO	1.0	+W15	-B5	-W11	-B12	--	9.5	10.5	1556.8
18	VERRELLI ANTONIO	1296	NC	MO	1.0	-B12	-W6	-B16	--	+BYE	8.0	8.0	1455.3

Indice analitico

Apertura Inglese, 7, 29
Apertura Réti, 24
Attacco Est Indiano, 5, 27, 30
Attacco Torre, 16
Attacco Trompowsky, 23, 31

Barbari, Samuel, 6, 14, 18, 23, 27
Brini, Dario, 8, 12, 17, 26
Bruni, Alessandro, 7, 15, 19, 24, 30

Castelli, Antonio, 9, 18, 26, 29

Difesa Alechin, 6
Difesa Caro–Kann, 11, 17
Difesa Est Indiana, 12, 17, 27, 30
Difesa Francese, 9, 10
Difesa Moderna, 16
Difesa Philidor, 9
Difesa Russa, 18, 29
Difesa Scandinava, 5, 22, 27
Difesa Siciliana, 4, 12, 22, 26
Difesa Slava, 13

Franchini, Gabriele, 4, 10, 16, 22, 28

Galli, Maria Vittoria, 5, 12, 18, 24, 28
Gambetto di Donna Accettato, 7, 20
Gambetto di Re Accettato, 18
Garofalo, Sergio, 9, 11, 18, 24, 30
Giuntini, Enrico, 7, 10, 17, 22, 29

Hodo, Dionis, 4, 19, 26, 30
Hodo, Jonian, 7, 13, 20, 26, 31

Mammi, Samuele, 7, 11, 17, 25, 29
Marinelli, Gian Marco, 6, 12, 16, 24, 27
Marinelli, Sofia, 5, 13, 17, 23, 29

Paoli, Walter, 5, 11, 16, 22, 27
Partita di Donna, 11, 30
Partita Italiana, 15, 21, 24
Partita Scozzese, 28
Partita Spagnola, 8, 14, 19

Sistema Colle–Zukertort, 12, 25

Tazzioli, Luca, 5, 11, 16, 22, 27

Vaccari, Luigi, 8, 12, 21, 25, 30
Vaccari, Marco, 9, 15, 21, 31
Verrelli, Antonio, 9, 14, 20