

Nuestro Círculo

Año 12 N° 590

Semanario de Ajedrez

14 de diciembre de 2013

TORNEOS EN EL C.A.V.P.



El Club de Ajedrez de Villa del Parque fue fundado el 20 de julio de 1933 en el barrio de Villa del Parque de la ciudad de Buenos Aires.

Son miembros de su Comisión Directiva los siguientes: Gustavo Águila, presidente; Claudio Sosa, secretario; Néstor Spagnuolo, tesorero; Alberto Paolucci, profesor, Marcelo Reides, Andrés Reinoso y Osmar Santero, vocales. Su sede actual se encuentra en la calle Santo Tomé N° 3821 de la ciudad de Buenos Aires.

TORNEO ABIERTO PRIMAVERA 2013



1°) Tarik Carson	5,5
2°) José Luis Sonsino	5,0
3°) Enrique Blusztajn	4,5
4°) Jorge Caamaño	4,5
5°) Martín Pires	4,5
6°) Jorge Callegari	4,5
7°) Félix Fiszman	3,5
8°) Fabián Gajgt	3,5

9°) Diego Sumic	3,0
10°) Pablo Silva	3,0
11°) Kevin Sonsino	2,5
12°) Claudio Sosa	2,5
13°) Orlando Leonardo	2,5
14°) Andrés Sonsino	2,0
15°) Norberto Silva	1,5

Blusztajn,E (1918) - Carson,T (2056) [C68]

1.e4 e5 2.Cf3 Cc6 3.Ab5 a6 4.Axc6 dxc6 5.d4 exd4 6.Dxd4 Dxd4 7.Cxd4 Ad7 8.Cc3 0-0-0 9.Ae3 Ab4 10.Cde2 Ce7 11.0-0-0 Tde8 12.Ad4 f6 13.Ca4 Cg6 14.f3 Ae6 15.a3 Ad6 16.g3 Ac4 17.The1 Af7 18.Ac5 Axc5 19.Cxc5 Ce5 20.Cg1 a5 21.b3 h5 22.Td2 h4 23.f4 hxg3 24.hxg3 Cg4 25.Td7 Thf8 26.Td2 b6 27.Cd3 Th8 28.Cf2 Cxf2 29.Txf2 Th1 30.Tfe2 c5 31.Rd2 c4 32.b4 axb4 33.axb4 Rb7 34.Cf3 Th3 35.e5 Tgx3 36.Te3 Ah5 37.exf6 Td8+ 38.Re2 gxf6 39.Rf2 Txf3+ 40.Txf3 Axf3 41.Rxf3 Td2 42.c3 Td3+? 43.Te3 Txe3+? 44.Rxe3 Rc6 45.Re4 Rd6 46.Rf5 Re7 47.b5 Rf7 48.Re4 Re6 49.f5+ Rd6 50.Rd4 c5+ 51.bxc6 Rxc6 52.Rxc4 b5+ 1/2-1/2

Carson,T (2056) - Piris,M (1912) [D63]

1.d4 Cf6 2.c4 e6 3.Cc3 d5 4.Ag5 Ae7 5.e3 Cbd7 6.Tc1 b6 7.cxd5 exd5 8.Cf3 Ab7 9.Ae2 0-0 10.0-0 h6 11.Ah4 Te8 12.Ag3 c6 13.h3 Ce4 14.Ah2 Cdf6 15.Ce5 Ad6 16.Cxe4 Axe5 17.dxe5 Cxe4 18.Ad3 Cc5 19.Ab1 Cd7 20.Dc2 Cf8 21.Rh1 c5 22.Tcd1 Dd7 23.Td2 Dc6 24.f4 Tac8 25.Ag3 Dg6 26.Dxg6 Cxg6 27.Tfd1 Tcd8 28.Ac2 b5 29.Af2 a5 30.Ae4 Ce7 31.Ah4 Td7 32.Axe7 Texe7 33.Axd5 Axd5 34.Txd5 Txd5 35.Txd5 Tc7 36.Rg1 Rf8 37.Rf2 Re7 38.Re2 Re6 39.Td6+ Re7 40.Ta6 a4 41.a3 Tb7 42.g4 b4 43.Txa4 1-0

Sumic,D (2089) - Carson,T (2056) [A39]

1.c4 c5 2.g3 Cc6 3.Ag2 Cf6 4.Cc3 g6 5.Cf3 Ag7 6.0-0 0-0 7.d4 cxd4 8.Cxd4 Cxd4 9.Dxd4 d6 10.Td1 Da5 11.Dh4 Tb8 12.Ah6 Dh5 13.Dxh5 Cxh5 14.Axg7

Cxg7 15.Cd5 Te8 16.Cc7 Tf8 17.a4 Ce6 18.Cd5 Te8 19.a5 Rf8 20.Ta3 Ad7 21.b4 Tec8 22.Tc1 Cc7 23.Ce3 Ca6 24.Tb1 Ae6 25.Tc3 Re8 26.Ad5 Cc7 27.Tbc1 Axd5 28.Cxd5 Cxd5 29.cxd5 Rd7 30.b5 Txc3 31.Txc3 Tc8 32.Txc8 Rxc8 33.Rg2 Rd7 34.e4 e6 35.h4 Re7 36.f4 exd5 37.exd5 f5 38.Rf3 Rf6 39.g4 fxg4+ 40.Rxg4 h6 41.Rg3 Rf5 42.Rf3 h5 43.Re3 Rg4 44.Re4 Rxh4 45.f5 Rg5 0-1

Carson,T (2056) - Sonsino,K (1765) [A52]

1.d4 Cf6 2.c4 e5 3.dxe5 Cg4 4.e4 Ac5 5.Dxg4 0-0 6.Ah6 1-0

Carson,T (2056) - Fiszman,F (1918) [A57]

1.d4 Cf6 2.Cf3 g6 3.c4 c5 4.d5 b5 5.cxb5 a6 6.b6 Dxb6 7.Cc3 d6 8.e4 Ag7 9.Ae2 0-0 10.0-0 Ag4 11.h3 Axf3 12.Axf3 Cbd7 13.Tb1 Ce8 14.Ae3 Dc7 15.Ae2 c4 16.Dc2 Tc8 17.Ca4 h6 18.Tfc1 f5 19.exf5 gxf5 20.Dd2 c3 21.Cxc3 Rh7 22.Axa6 Ta8 23.Ae2 Da5 24.a3 Cef6 25.Dd3 Cg8 26.Ag4 Ce5 27.Axf5+ Rh8 28.Dc2 Cf6 29.Ae6 Da6 30.De2 Dxe2 31.Cxe2 Tfb8 32.Ad4 Ce4 33.Td1 Tb3 34.Cc1 Tb7 35.Cd3 1-0

Sonsino,J (2005) - Carson,T (2056) [A34]

1.c4 c5 2.g3 Cc6 3.Ag2 Cf6 4.Cc3 g6 5.Cf3 Ag7 6.0-0 0-0 7.a3 d5 8.cxd5 Cxd5 9.Dc2 Cxc3 10.bxc3 Dc7 11.d4 cxd4 12.cxd4 Dd6 13.Af4 Cxd4 14.Cxd4 Dxd4 15.Tab1 Dc3 16.Da4 Dd4 17.Da5 Dc3 18.Da4 Dd4 1/2-1/2

Carson,T (2056) - Caamaño,J (1943) [E12]

1.d4 Cf6 2.c4 e6 3.a3 b6 4.Cf3 Ab7 5.Ag5 Ae7 6.Cc3 d6 7.g3 Cbd7 8.Ag2 h6 9.Axf6 Cxf6 10.Dc2 c5 11.Da4+ Rf8 12.Td1 cxd4 13.Txd4 a6 14.0-0 Dc7 15.Tc1 Ac6 16.Db3 g6 17.Ce1 Rg7 18.Axc6 Dxc6 19.Cg2 h5 20.Da2 Cg4 21.h3 Af6 22.Td2 Ch6 23.b3 h4 24.gxh4 Cf5 25.Dc2 Cxh4 26.De4 Dc5 27.b4 Dg5 28.f4 Dxg2+ 29.Dxg2 Cxg2 30.Rxg2 Axc3 31.Txc3 Th4 1/2-1/2

T. CANDIDATURA 2013

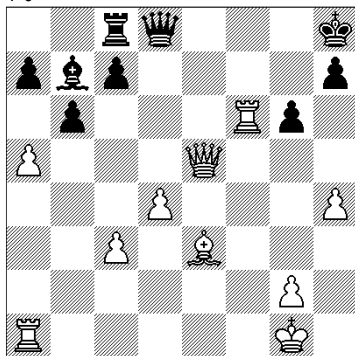
16 PARTICIPANTES

Marcelo Reides
Jorge Caamaño
Sergio Rago
Javier Caramia
Gustavo Aguila
Tarik Carson
Marisa Zurriel
Félix Fiszman
Néstor Spagnuolo
Kevin Sonsino
Martín Pires
Enrique Blusztajn
José Luis Sonsino
Claudio Sosa
Jorge Callegari
Andrés Reinoso

PARTIDAS

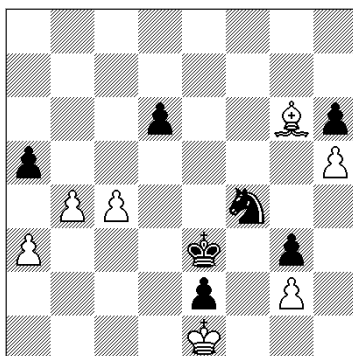
Reides,M - Sonsino,K [E47] Candidatura CAVP (1.1), 11.11.2013

1.d4 Cf6 2.c4 e6 3.Cc3 Ab4 4.e3 0-0
 5.Ad3 b6 6.Cge2 Ab7 7.0-0 d5 8.cxd5
 Cxd5 9.e4 Cxc3 10.bxc3 Ae7 11.a4 Cd7
 12.a5 Tc8 13.Ae3 e5 14.f4 exf4 15.Cxf4
 Cf6 16.Ch5 Cxe4 17.Dg4 Cg5 18.h4
 Ce6 19.Af5 g6 20.Axe6 fxe6 21.Dxe6+
 Rh8 22.De5+ Af6 23.Cxf6 Txf6 24.Txf6
 1-0



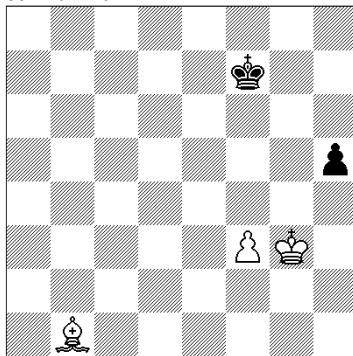
Sonsino,K - Reides,M [B04] Candidatura CAVP (1.2), 13.11.2013

1.e4 Cf6 2.e5 Cd5 3.c4 Cb6 4.d4 d6
 5.exd6 cxd6 6.Cf3 g6 7.Ae3 Ag7 8.Dd2
 Ag4 9.Ae2 Cc6 10.b3 e5 11.Cc3 0-0
 12.d5 Ce7 13.Ah6 Axb6 14.Dxb6 Axf3
 15.Axf3 Cf5 16.Dd2 Cd4 17.Ad1 f5
 18.0-0 Df6 19.Ce2 Cxe2+ 20.Axe2 e4
 21.f3 De5 22.fxe4 fxe4 23.Txf8+ Txf8
 24.Tf1 Txf1+ 25.Axf1 e3 26.De2 Cd7
 27.Dg4 Df6 28.De6+ Dxe6 29.dxe6 Cc5
 30.Ae2 Cxe6 31.Af3 Cd4 32.Axb7 a5
 33.Rf1 Rf7 34.h4 Rf6 35.Af3 Re5 36.h5
 g5 37.Ae2 h6 38.Ad3 Rf4 39.Rg1 g4
 40.Rf1 g3 41.Re1 Re5 42.Rf1 Ce6
 43.Ag6 Rd4 44.a3 Cf4 45.b4 e2+
 46.Re1 Re3 0-1



Caramia,J - Sonsino,J [A41] Candidatura CAVP (1.1), 22.11.2013

1.c4 e5 2.Cc3 Cc6 3.e3 d6 4.d4 g6
 5.Cf3 Ag7 6.Ae2 Ag4 7.d5 Cce7 8.Db3
 b6 9.e4 Cf6 10.Ae3 0-0 11.Dc2 a5
 12.h3 Axf3 13.Axf3 Rh8 14.g4 Cd7
 15.Dd2 f5 16.Ag5 f4 17.Cb5 Cc5
 18.Axe7 Dxe7 19.g5 Tf7 20.h4 h5 21.b3
 De8 22.Re2 Rg8 23.Dc2 Af8 24.Thd1
 Dd7 25.Cc3 Ae7 26.Th1 Th7 27.Tag1
 Tf8 28.Rd1 Ad8 29.De2 Df7 30.Rc2
 Rg7 31.Tb1 Dd7 32.Df1 Df7 33.Dh3
 Thh8 34.Cb5 Te8 35.Thd1 Tef8 36.Cc3
 Ae7 37.Rd2 Tb8 38.Re1 De8 39.Td2
 Ta8 40.Ad1 Df7 41.f3 Thb8 42.a3 Ad8
 43.b4 axb4 44.axb4 Ta3 45.Cb5 Te3+
 46.Te2 Cxe4 47.Txe3 fxe3 48.Ta1 Cf2
 49.De6 Cd3+ 50.Rf1 Cxb4 51.Dxf7+
 Rxf7 52.Ta7 Re8 53.Re2 Rd7 54.Ta4
 c6 55.Ta7+ Re8 56.Cxd6+ Rf8 57.Ta4
 Ae7 58.Txb4 Axd6 59.Ta4 cxd5 60.cxd5
 Ac5 61.Ac2 Td8 62.Ae4 Td7 63.Axg6
 Txd5 64.Ad3 b5 65.Ta8+ Rg7 66.Tb8
 b4 67.Tb7+ Rf8 68.g6 Ae7 69.g7+ Rg7
 70.Txe7+ Rf6 71.Tb7 Td4 72.Tb6+ Rg7
 73.Ae4 Td2+ 74.Rxe3 Th2 75.Te6 b3
 76.Txe5 Txb4 77.Tb5 Th2 78.Txb3 Rf6
 79.Tb6+ Rg7 80.Tg6+ Rf7 81.Th6 Rg7
 82.Th7+ Rf6 83.Rf4 Th4+ 84.Rg3 Th1
 85.Th6+ Rg7 86.Tb6 Rf7 87.Tb1 Txb1
 88.Axb1 1-0



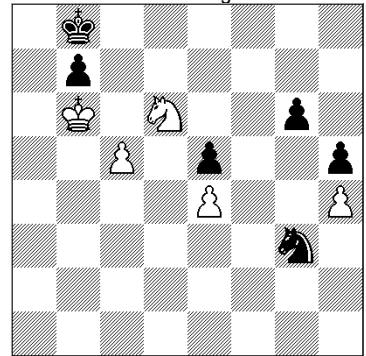
Carson,T - Fiszman,F [B28] Candidatura CAVP (1.1), 11.11.2013

1.d4 Cf6 2.c4 c5 3.Cf3 e6 4.Cc3 a6 5.e4
 cxd4 6.Cxd4 Cc6 7.Cxc6 bxc6 8.e5 Cg8
 9.g3 g6 10.Ag2 Ab4 11.0-0 Axc3
 12.bxc3 h6 13.Ae3 Ce7 14.Dd2 Cf5
 15.Ac5 Da5 16.Ad6 Cxd6 17.Dxd6 Ta7

18.Tab1 Dc7 19.Dc5 Tb7 20.Tb4 a5
 21.Tb3 a4 22.Tb4 Ta7 23.Tfb1 Ta5
 24.Tb5 Ta7 25.Tb8 Rd8 26.T1b6 Ta6
 27.Txa6 Dxb8 28.Db6+ Dxb6 29.Txb6
 Rc7 30.Tb4 Ab7 31.Txa4 Ta8 32.Txa8
 Axa8 33.c5 Rb7 34.Af1 Ra7 35.Ad3
 Ab7 36.Rf1 Aa6 37.c4 Ac8 38.Ac2 Ra6
 39.f4 Ra7 40.g4 Aa6 41.Ad3 Rb8
 42.Rf2 Rc7 43.Rg3 Rd8 44.h4 Re7
 45.h5 gxh5 46.g5 hxg5 47.fxg5 Rf8
 48.Rh4 Rg7 49.Rxh5 Ab7 50.Rg4 Aa6
 51.a3 Rf8 52.Rf4 Re7 53.Re4 Rd8
 54.Rd4 Rc7 55.Rc3 Rd8 56.Rb4 Rc7
 57.Ra5 Rb7 58.a4 Ra7 59.Rb4 Rb7
 60.Ah7 Rc7 61.Ag8 Rd8 62.Axf7 Re7
 63.Ag6 Rf8 64.Ad3 Rf7 65.Ra5 Ac8
 66.Rb6 d5 67.cxd6 c5 68.Rc7 1-0

Fiszman,F - Carson,T [C54] Candidatura CAVP (1.2), 13.11.2013

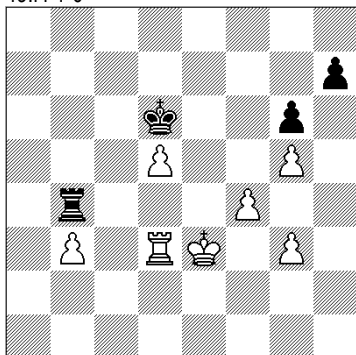
1.e4 e5 2.Cf3 Cc6 3.Ac4 Ac5 4.c3 Cf6
 5.b4 Ab6 6.d3 d6 7.a4 a6 8.a5 Aa7 9.0-0
 0-0 10.Ae3 Ag4 11.h3 Ae6 12.Axe6
 fxe6 13.Axa7 Txa7 14.Cbd2 De7
 15.Ch2 Taa8 16.De2 Cd7 17.g3 Tf7
 18.Rg2 Taf8 19.De3 Df6 20.h4 De7
 21.f3 d5 22.Dg5 d4 23.Dxe7 Txe7
 24.Tfc1 Cdb8 25.Tab1 h5 26.c4 g6
 27.c5 Ca7 28.Cc4 Cbc6 29.Ca3 Cb5
 30.Cxb5 axb5 31.Tc2 Cb8 32.Cf1 Tef7
 33.Cd2 c6 34.Tf1 Ca6 35.Tb2 Rg7
 36.Cb1 Rh6 37.Ca3 Rg7 38.Cc2 Cb8
 39.Tbb1 Ca6 40.Ta1 Rh6 41.Tf2 Rg7
 42.Taf1 Cb8 43.f4 Cd7 44.Tf3 Tf6
 45.T1f2 T6f7 46.fxe5 Cxe5 47.Txf7+
 Txf7 48.Txf7+ Rxf7 49.Cxd4 Re7 50.Rf1
 Cxd3 51.Cxc6+ Rd7 52.Cd4 Cxb4
 53.Re2 Cc6 54.Cb3 e5 55.Rd3 Re6
 56.Rc3 Rd7 57.Cd2 Cxa5 58.Rb4 Cc6+
 59.Rxb5 Cd4+ 60.Rb6 Rc8 61.Cc4 Ce2
 62.Cd6+ Rb8 63.Cf7 Cxg3 64.Cd6 1-0



Spagnuolo,N - Reinoso,A [C42] Candidatura CAVP (1.1), 13.11.2013

1.e4 e5 2.Ac4 Cf6 3.Cc3 Cc6 4.Cf3 Ab4
 5.0-0 0-0 6.Te1 d6 7.h3 Cd4 8.Cd5
 Cxd5 9.Axd5 c6 10.Cxd4 exd4 11.Ab3
 Df6 12.Tf1 d3 13.c3 Ac5 14.Ac4 d5
 15.exd5 Df4 16.Axd3 Ad6 17.g3 Dg5
 18.Ae4 f5 19.d4 f4 20.h4 Df6 21.Dh5 g6
 22.Dg5 Dxc5 23.hxg5 Ah3 24.Ag2 Axc2
 25.Rxc2 f3+ 26.Rh3 Tae8 27.dxc6 bxc6
 28.Ae3 Te4 29.Tae1 Tfe8 30.Ad2 Te2

31.Txe2 Txe2 32.Ac1 Te4 33.Ae3 Rf7
34.Te1 Re6 35.a3 Rd5 36.b3 Ae7
37.c4+ Re6 38.Td1 Axa3 39.d5+ cxd5
40.cxd5+ Rd6 41.Axa7 Tb4 42.Td3 Tb7
43.Ae3 Tb5 44.Af4+ Rd7 45.Rg4 Ad6
46.Rxf3 Axf4 47.Rxf4 Rd6 48.Re3 Tb4
49.f4 1-0

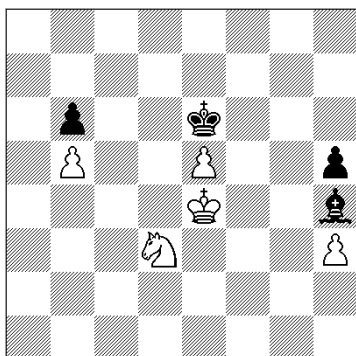


Reinoso,A - Spagnuolo,N [A11]

1.Cf3 d5 2.c4 dxc4 3.g3 Cd7 4.Ag2 c6
5.0-0 Cgf6 6.Ca3 Cb6 7.Dc2 Dd5 8.Ch4
Dd4 9.Dc3 Dxc3 10.bxc3 Ae6 11.Cc2
Ad5 12.f3 c5 13.e4 Ac6 14.Cf5 Ca4
15.Cfe3 b5 16.Tb1 e6 17.Te1 Ae7
18.e5 Cd7 19.Cd1 Cdb6 20.Cde3 Td8
21.Ca3 a6 22.Rf2 Aa8 23.Cac2 0-0
24.Te2 Td7 25.Cd1 Tfd8 26.Re1 Cd5
27.a3 h6 28.Ab2 Cdb6 29.Aa1 Ag5
30.Cce3 Cd5 31.Cc2 Cdb6 32.Cce3
Cd5 33.Cc2 Cdb6 1/2-1/2

Aguila,G - Carson,T [A06]

1.Cf3 Cf6 2.b3 d5 3.Ab2 c5 4.e3 Af5
5.Ab5+ Ad7 6.Axd7+ Cbx7 7.c4 e6
8.0-0 Ae7 9.cxd5 exd5 10.d4 0-0
11.Cc3 b6 12.dxc5 Cxc5 13.Cd4 Dd7
14.De2 Tfd8 15.Tf1 Tac8 16.b4 Cce4
17.Cxe4 Cxe4 18.b5 Cc3 19.Axc3 Txc3
20.Cc6 Te8 21.Dd2 Af6 22.Tab1 Tc5
23.a4 a6 24.Tb3 axb5 25.axb5 Ta8
26.h3 De8 27.De2 De4 28.Tb4 De8
29.Tf4 De6 30.Dd3 h6 31.Tf5 Ta1
32.Txa1 Axa1 33.Txd5 Txd5 34.Dxd5
Af6 35.Dxe6 fxe6 36.Rf1 Rf7 37.Re2
Re8 38.Rd3 Rd7 39.Rc4 Rd6 40.e4 g5
41.g3 e5 42.Cb4 Ad8 43.Cd3 Re6
44.Rc3 h5 45.Rd2 Ae7 46.Re3 Rf6
47.f4 gxf4+ 48.gxf4 exf4+ 49.Rxf4 Re6
50.e5 Ah4 51.Re4 1-0

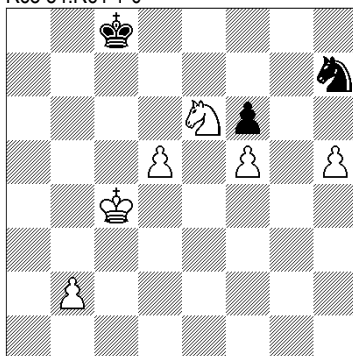


Carson,T - Aguila,G [A39]

1.d4 Cf6 2.Cf3 g6 3.g3 Ag7 4.Ag2 0-0
5.c4 c5 6.Cc3 cxd4 7.Cxd4 Cc6 8.0-0
Cg4 9.Cxc6 dxc6 10.Dc2 Dd4 11.Cb1
Ce5 12.Ca3 Af5 13.e4 Ag4 14.h3 Af3
15.Ae3 Dd7 16.Tab1 f5 17.Axf3 Cxf3+
18.Rg2 fxe4 19.Dxe4 Cd2 20.Tfd1
Dxh3+ 21.Rxh3 Cxe4 22.Rg2 Tfd8
23.Cc2 Cd6 24.b3 Ce4 25.Ad4 Axd4
26.Txd4 Txd4 27.Cxd4 Td8 28.Cf3 Cc3
29.Tc1 Cxa2 30.Ta1 Cb4 31.Txa7 Td7
32.Ce5 Tc7 33.Ta4 c5 34.Ta8+ Rg7
35.Td8 Rf6 36.f4 Cc6 37.Cg4+ Rg7
38.Td5 b6 39.Ce3 e6 40.Td6 Rf7
41.Cg4 Re7 42.Td3 Ta7 43.Ce5 Cxe5
44.fxe5 Td7 45.Te3 h5 46.Rf3 g5 47.b4
Rf7 48.bxc5 bxc5 49.Ta3 Rg6 50.Ta5
Tc7 51.Re4 h4 52.g4 Tf7 53.Txc5 h3
54.Tb5 h2 55.Tb1 Tf4+ 56.Rd3 Txg4
57.Th1 Th4 58.c5 g4 59.Re4 g3+
60.Rf3 Tg4 61.Rg2 Rf5 62.c6 Rxe5
63.c7 Tg8 64.Tc1 Tc8 65.Rxg3 Txc7
66.Te1+ Rd5 67.Td1+ Re4 68.Te1+ Rf5
69.Tf1+ Rg5 70.Rxh2 e5 71.Rg3 e4
72.Tf8 1/2-1/2

Zuriel,M - Spagnuolo,N [C01]

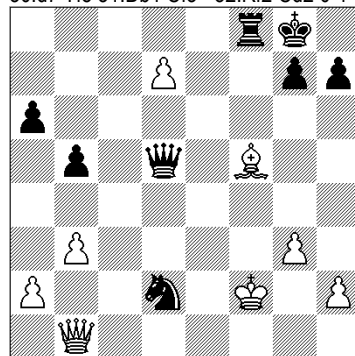
1.e4 e6 2.d4 d5 3.Cc3 Ab4 4.exd5 exd5
5.Ad3 Cf6 6.Cge2 c6 7.0-0 0-0 8.Cg3
Te8 9.h3 b6 10.Cce2 Aa6 11.c3 Axd3
12.Dxd3 Af8 13.Ag5 Cbd7 14.Cf5 g6
15.Ch6+ Axb6 16.Axb6 De7 17.Tae1
De4 18.Dd2 De6 19.f3 Dd6 20.Cf4 Cf8
21.Cd3 Ch5 22.Txe8 Txe8 23.Te1
Txe1+ 24.Dxe1 f6 25.De8 Cg7 26.Da8
a5 27.Db7 Cd7 28.Dc8+ Rf7 29.Dh8
Df8 30.Dxh7 Dg8 31.Dxg8+ Rxg8
32.Axg7 Rxg7 33.h4 Rf7 34.Rf2 Re7
35.Re3 Rd6 36.Cf4 Cf8 37.Ch3 a4
38.g4 c5 39.f4 Re6 40.f5+ gxf5 41.Cf4+
Rd6 42.gxf5 b5 43.dxc5+ Rxc5 44.h5
Ch7 45.Ce6+ Rc4 46.Rd2 d4 47.cxd4
b4 48.Rc2 b3+ 49.axb3+ axb3+ 50.Rd2
Rb5 51.d5 Rb6 52.Rc3 Rb7 53.Rxb3
Rc8 54.Rc4 1-0



Spagnuolo,N - Zuriel,M [B33]

1.e4 c5 2.Cf3 Cc6 3.d4 cxd4 4.Cxd4 e5
5.Cb5 d6 6.C1c3 a6 7.Ca3 Ae7 8.g3
Cf6 9.Ag2 Ae6 10.Ag5 0-0 11.Axf6 Axf6
12.0-0 Tc8 13.Cd5 Ag5 14.c3 Ce7
15.c4 Axd5 16.cxd5 Db6 17.b3 Ah6

18.Rh1 Dc5 19.Cc4 f5 20.f4 b5 21.Cxe5
dxe5 22.fxe5 fxe4 23.Axe4 Txf1+
24.Dxf1 Dd4 25.Te1 Ad2 26.d6 Axe1
27.Dxe1 Cg6 28.Af5 Dd5+ 29.Rg1 Cxe5
30.d7 Tf8 31.Db1 Cf3+ 32.Rf2 Cd2 0-1

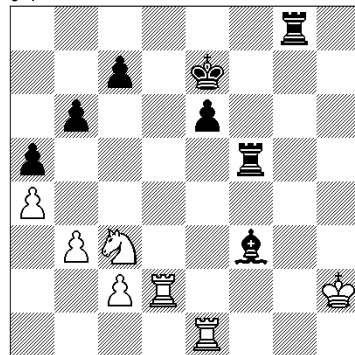


Reides,M - Caamaño,J [B50]

1.e4 c5 2.Cf3 d6 3.c3 Cf6 4.Ad3 g6 5.0-0
Ag7 6.Ac2 0-0 7.d4 cxd4 8.cxd4 Cc6
9.h3 Cb4 10.Ab3 d5 11.e5 Ce8 12.Cc3
Cc7 13.Te1 b6 14.Ag5 h6 15.Af4 Aa6
16.Te3 e6 17.a3 Cc6 18.Ac2 Ca5 19.b3
Tc8 20.h4 h5 21.Cg5 Cc6 22.Tg3 Ce7
23.a4 Cf5 24.Th3 Ch6 25.b4 Ac4
26.Dd2 Cg4 27.Cd1 f5 28.Tg3 De7
29.Ch3 Rh7 30.Ag5 Df7 31.f3 Cxe5
32.Af4 Cxf3+ 33.gxf3 Df6 34.Ae5 Dxh4
35.Cg5+ Rh6 36.Axg7+ Rxg7 37.Th3 1-0

Caamaño,J - Reides,M [C00]

1.e4 e6 2.g3 d5 3.d3 dxe4 4.dxe4
Dxd1+ 5.Rxd1 Cf6 6.Ag2 Ac5 7.Re2
Cg4 8.Ch3 Ad7 9.a4 Ac6 10.f3 Ce5
11.b3 Cbd7 12.Ab2 f6 13.Td1 g5 14.Cf2
h5 15.Cd2 Re7 16.Cf1 h4 17.Td2 Th7
18.Tad1 a5 19.Cd3 Cxd3 20.Txd3 Ag1
21.Ad4 Axd4 22.Txd4 hxg3 23.hxg3
Ce5 24.Rf2 Tah8 25.T4d2 Ta8 26.Re3
Ae8 27.f4 gxf4+ 28.gxf4 Cg6 29.e5 fxe5
30.fxe5 Tb8 31.Cg3 Cxe5 32.Ce4 b6
33.Rf4 Th5 34.Cc3 Tf5+ 35.Rg3 Ah5
36.Te1 Tg8+ 37.Rh2 Cf3+ 38.Axf3 Axf3
0-1



NUESTRO CÍRCULO

Director: Arqto. Roberto Pagura
ropagura@fibertel.com.ar
(54 -11) 4958-5808 Yatay 120 8°D
1184. Buenos Aires - Argentina